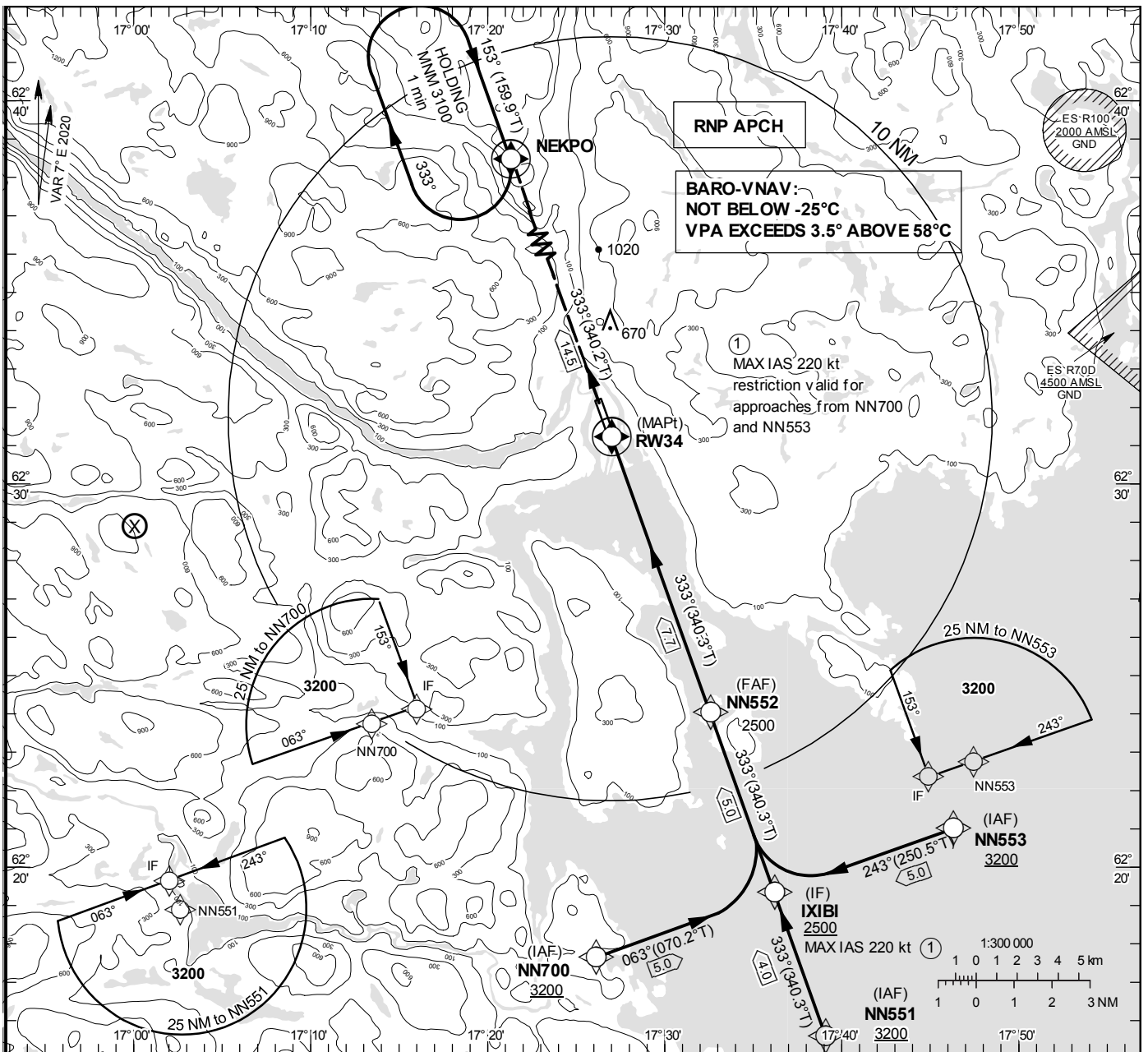


INSTRUMENT APPROACH CHART – ICAO

THR ELEV 13.3 ft, AD ELEV 17 ft
 OCH are related to THR.
 BRG are MAG (True).
 ALT, HGT and ELEV in ft.

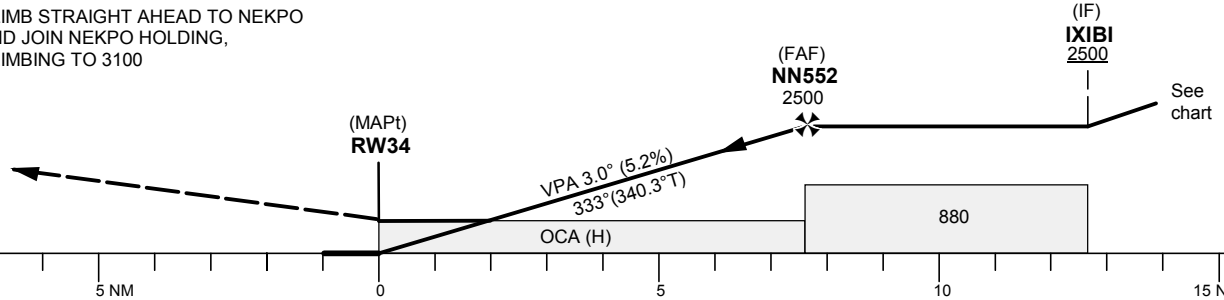
SUNDSVALL TOWER 129.555
 SUNDSVALL ATIS 127.405

RNP RWY 34
 (LNAV, LNAV/VNAV only)



TA 5000 ft AMSL RDH 50.0 ft

CLIMB STRAIGHT AHEAD TO NEKPO AND JOIN NEKPO HOLDING, CLIMBING TO 3100



Cat of ACFT	OCA (H)				Final approach Dist to RW34	Distance FAF-MAPt 7.7 NM						
	A	B	C	D		7	6	5	4	3	2	
LNAV/VNAV	360(340)	370(350)	380(360)	420(400)	ALT	2290	1970	1660	1340	1020	700	
LNAV	560(540)				GS	kt	80	100	120	140	160	180
					Rate of descent	ft/min	425	530	635	745	850	955

RNP RWY 34 via NN553

Path Desc	Waypoint Identifier	Fly-over	Course °M(°T)	Dist (NM)	Turn Dir	Altitude	Speed	VPA/RDH	Rec Navaid	Navigation Specification
IF	NN553	-	-	-	-	+3200	-	-	-	RNP APCH
TF	IXIBI	-	243°(250.5°)	5.0	-	+2500	-220	-	-	RNP APCH

RNP RWY 34 via NN551

Path Desc	Waypoint Identifier	Fly-over	Course °M(°T)	Dist (NM)	Turn Dir	Altitude	Speed	VPA/RDH	Rec Navaid	Navigation Specification
IF	NN551	-	-	-	-	+3200	-	-	-	RNP APCH
TF	IXIBI	-	333°(340.3°)	4.0	-	+2500	-	-	-	RNP APCH

RNP RWY 34 via NN700

Path Desc	Waypoint Identifier	Fly-over	Course °M(°T)	Dist (NM)	Turn Dir	Altitude	Speed	VPA/RDH	Rec Navaid	Navigation Specification
IF	NN700	-	-	-	-	+3200	-	-	-	RNP APCH
TF	IXIBI	-	063°(070.2°)	5.0	-	+2500	-220	-	-	RNP APCH

Path Desc	Waypoint Identifier	Fly-over	Course °M(°T)	Dist (NM)	Turn Dir	Altitude	Speed	VPA/RDH	Rec Navaid	Navigation Specification
IF	IXIBI	-	-	-	-	+2500	-	-	-	RNP APCH
TF	NN552	-	333°(340.3°)	5.0	-	@2500	-	-	-	RNP APCH
TF	RW34	Y	333°(340.3°)	7.7	-	@63	-	-3.0/50	-	RNP APCH
TF	NEKPO	Y	333°(340.2°)	14.5	-	-	-	-	-	RNP APCH
HM	NEKPO	Y	153°(159.9°)	-	R	+3100	-	-	-	RNAV 1