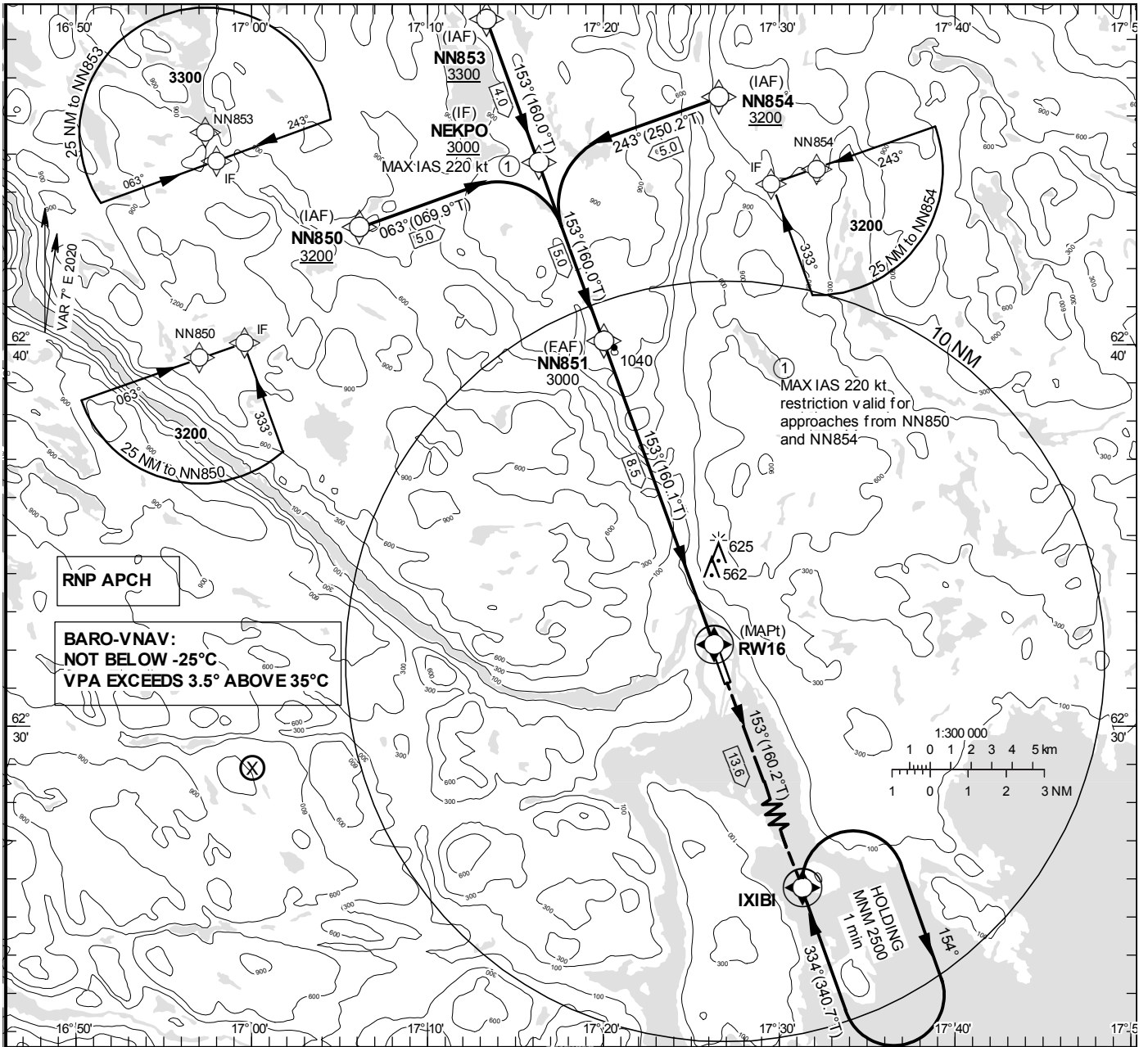


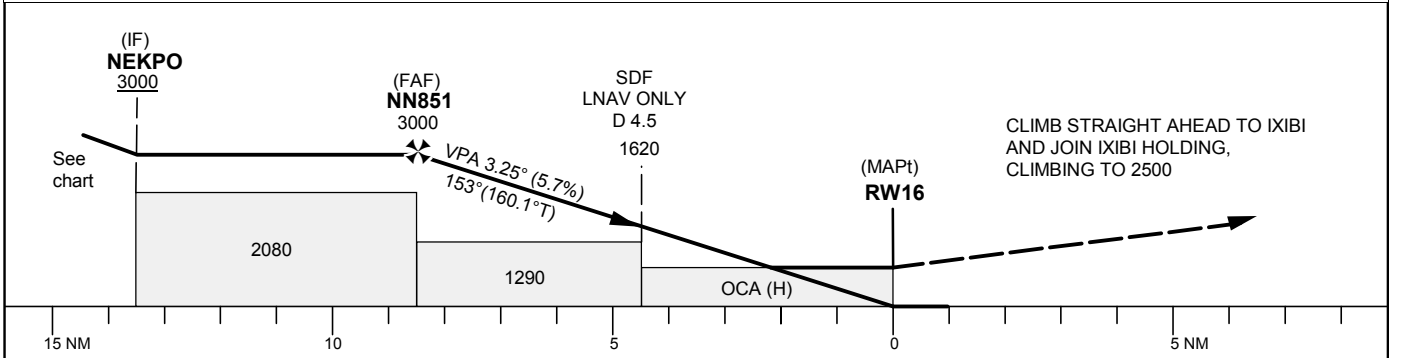
INSTRUMENT APPROACH CHART – ICAO
THR ELEV 17.1 ft, AD ELEV 17 ft
 OCH are related to THR.
 BRG are MAG (True).
 ALT, HGT and ELEV in ft.

SUNDSVALL TOWER 129.555
 SUNDSVALL ATIS 127.405

RNP RWY 16
(LNAV, LNAV/VNAV only)



TA 5000 ft AMSL RDH 50.0 ft



OCA (H)					Final approach	Distance FAF-MAPT 8.5 NM						
Cat of ACFT	A	B	C	D	Dist to RW16	8	7	6	5	4	3	
LNAV/VNAV	700(680)	700(680)	710(690)	710(690)	ALT	2830	2480	2140	1790	1450	1100	
LNAV	760(740)				GS	kt	80	100	120	140	160	180
					Rate of descent	ft/min	460	575	690	805	920	1035

RNP RWY 16 via NN850

Path Desc	Waypoint Identifier	Fly-over	Course °M(°T)	Dist (NM)	Turn Dir	Altitude	Speed	VPA/RDH	Rec Navaid	Navigation Specification
IF	NN850	-	-	-	-	+3200	-	-	-	RNP APCH
TF	NEKPO	-	063°(069.9°)	5.0	-	+3000	-220	-	-	RNP APCH

RNP RWY 16 via NN853

Path Desc	Waypoint Identifier	Fly-over	Course °M(°T)	Dist (NM)	Turn Dir	Altitude	Speed	VPA/RDH	Rec Navaid	Navigation Specification
IF	NN853	-	-	-	-	+3300	-	-	-	RNP APCH
TF	NEKPO	-	153°(160.0°)	4.0	-	+3000	-	-	-	RNP APCH

RNP RWY 16 via NN854

Path Desc	Waypoint Identifier	Fly-over	Course °M(°T)	Dist (NM)	Turn Dir	Altitude	Speed	VPA/RDH	Rec Navaid	Navigation Specification
IF	NN854	-	-	-	-	+3200	-	-	-	RNP APCH
TF	NEKPO	-	243°(250.2°)	5.0	-	+3000	-220	-	-	RNP APCH

Path Desc	Waypoint Identifier	Fly-over	Course °M(°T)	Dist (NM)	Turn Dir	Altitude	Speed	VPA/RDH	Rec Navaid	Navigation Specification
IF	NEKPO	-	-	-	-	+3000	-	-	-	RNP APCH
TF	NN851	-	153°(160.0°)	5.0	-	@3000	-	-	-	RNP APCH
TF	RW16	Y	153°(160.1°)	8.5	-	@67	-	-3.25/50	-	RNP APCH
TF	IXIBI	Y	153°(160.2°)	13.6	-	-	-	-	-	RNP APCH
HM	IXIBI	Y	334°(340.7°)	-	R	+2500	-	-	-	RNAV 1