

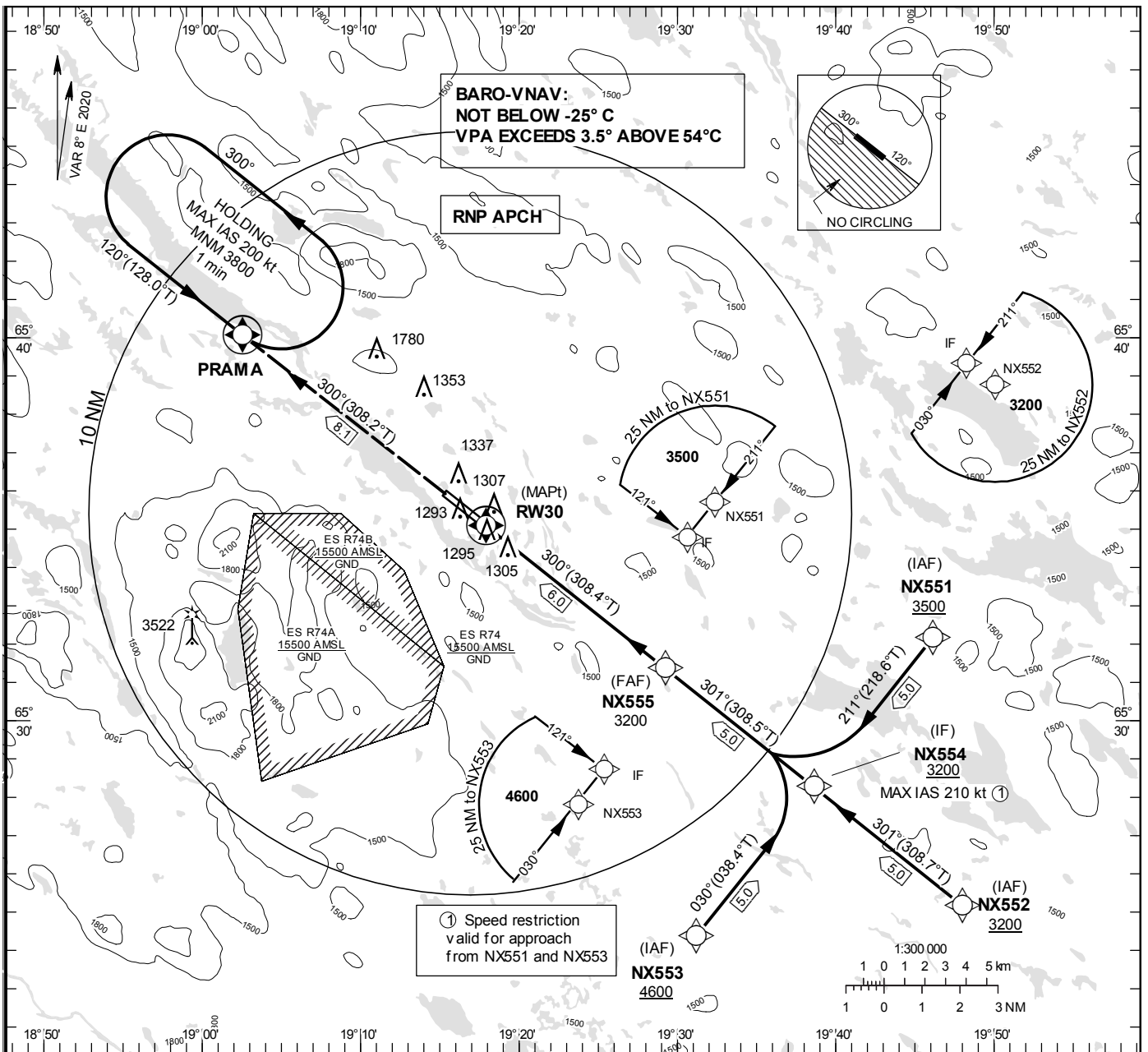
INSTRUMENT APPROACH CHART – ICAO

THR ELEV 1240.1 ft, AD ELEV 1245 ft
 OCH are related to THR.
 BRG are MAG (True).
 ALT, HGT and ELEV in ft.

ARVIDSJAUR
 TOWER/INFORMATION 122.730

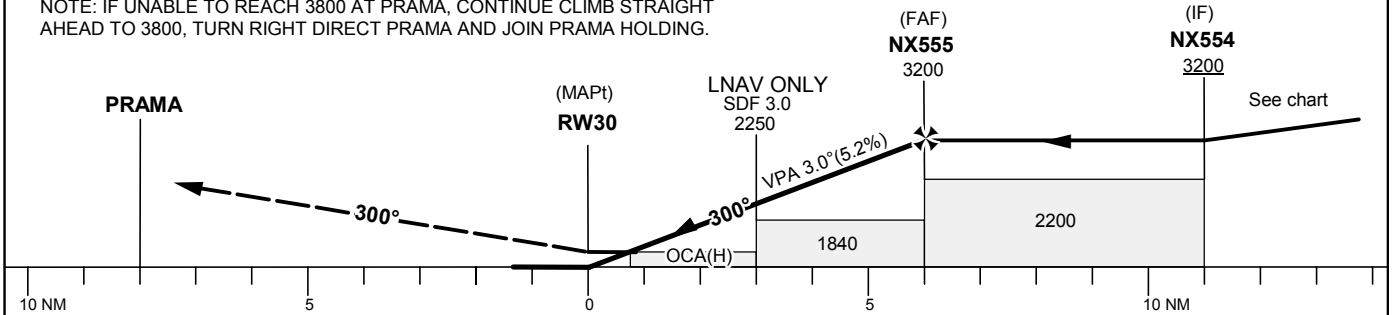
RNP RWY 30

EGNOS Ch 78872 E30A



TA 5000 ft AMSL RDH 50 ft

CLIMB TO PRAMA AND JOIN PRAMA HOLDING.
 NOTE: IF UNABLE TO REACH 3800 AT PRAMA, CONTINUE CLIMB STRAIGHT AHEAD TO 3800, TURN RIGHT DIRECT PRAMA AND JOIN PRAMA HOLDING.



Cat of ACFT	OCA (H)				Final approach Dist to RW30	Distance FAF-MAPt 6.0 NM					
	A	B	C	D		1	2	3	4	5	6
LPV	1423 (183)	1435 (195)	1446 (206)	1456 (216)	ALT	1610	1930	2250	2560	2880	3200
LNAV/VNAV	1437 (197)	1450 (210)	1458 (218)	1468 (228)	GS	ft	80	100	120	140	160
LNAV	1560 (320)				Rate of descent	ft/min	425	530	635	745	850
Circling NE RWY	1640 (400)	1740 (500)	2180 (940)	2180 (940)							

RNP RWY 30 via NX551

Path Desc	Waypoint Identifier	Fly-over	Course °M(°T)	Dist (NM)	Turn Dir	Altitude	Speed	VPA/RDH	Rec Navaid	Navigation Specification
IF	NX551	-	-	-	-	+3500	-	-	-	RNP APCH
TF	NX554	-	211°(218.6°)	5.0	-	+3200	-210	-	-	RNP APCH

RNP RWY 30 via NX552

Path Desc	Waypoint Identifier	Fly-over	Course °M(°T)	Dist (NM)	Turn Dir	Altitude	Speed	VPA/RDH	Rec Navaid	Navigation Specification
IF	NX552	-	-	-	-	+3200	-	-	-	RNP APCH
TF	NX554	-	301°(308.7°)	5.0	-	+3200	-	-	-	RNP APCH

RNP RWY 30 via NX553

Path Desc	Waypoint Identifier	Fly-over	Course °M(°T)	Dist (NM)	Turn Dir	Altitude	Speed	VPA/RDH	Rec Navaid	Navigation Specification
IF	NX553	-	-	-	-	+4600	-	-	-	RNP APCH
TF	NX554	-	030°(038.4°)	5.0	-	+3200	-210	-	-	RNP APCH

Path Desc	Waypoint Identifier	Fly-over	Course °M(°T)	Dist (NM)	Turn Dir	Altitude	Speed	VPA/RDH	Rec Navaid	Navigation Specification
IF	NX554	-	-	-	-	+3200	-	-	-	RNP APCH
TF	NX555	-	301°(308.5°)	5.0	-	@3200	-	-	-	RNP APCH
TF	RW30	Y	300°(308.4°)	6.0	-	@1290	-	-3.00/50	-	RNP APCH
TF	PRAMA	Y	300°(308.2°)	8.1	-	-	-	-	-	RNP APCH

Holding PRAMA

Path Desc	Waypoint Identifier	Fly-over	Course °M(°T)	Dist (NM)	Turn Dir	Altitude	Speed	VPA/RDH	Rec Navaid	Navigation Specification
HM	PRAMA	Y	120°(128.0°)	-	L	+3800	-200	-	-	RNP 1

FAS Data Block

RNP RWY 30

Input data

Operation Type	0
SBAS Provider	1 (EGNOS)
Airport Identifier	ESNX
Runway	30
Runway Letter	0 (None)
Approach Performance Designator	0
Route Indicator	
Reference Path Data Selector	0
Reference Path Identifier	E30A
LTP/FTP Latitude	653504.8805N
LTP/FTP Longitude	0191755.5170E
LTP/FTP Ellipsoidal Height (metres)	406.0
FPAP Latitude	653554.8010N
Delta FPAP Latitude (seconds)	49.9205
FPAP Longitude	0191522.2190E
Delta FPAP Longitude (seconds)	-153.2980
Threshold Crossing Height	50.0
TCH Units Selector	0 (feet)
Glidepath Angle (degrees)	3.00
Course Width (metres)	105.00
Length Offset (metres)	0
HAL (metres)	40.0
VAL (metres)	50.0

Output data

Data Block	10 18 0E 13 05 1E 00 00 01 30 33 05 61 59 25 1C 7A 39 48 08 DC 23 01 86 01 5C 52 FB F4 01 2C 01 64 00 C8 FA D4 1D 64 23
Calculated CRC Value	D41D6423

Required Additional Data

ICAO Code	ES
LTP/FTP Orthometric Height (metres)	378.0