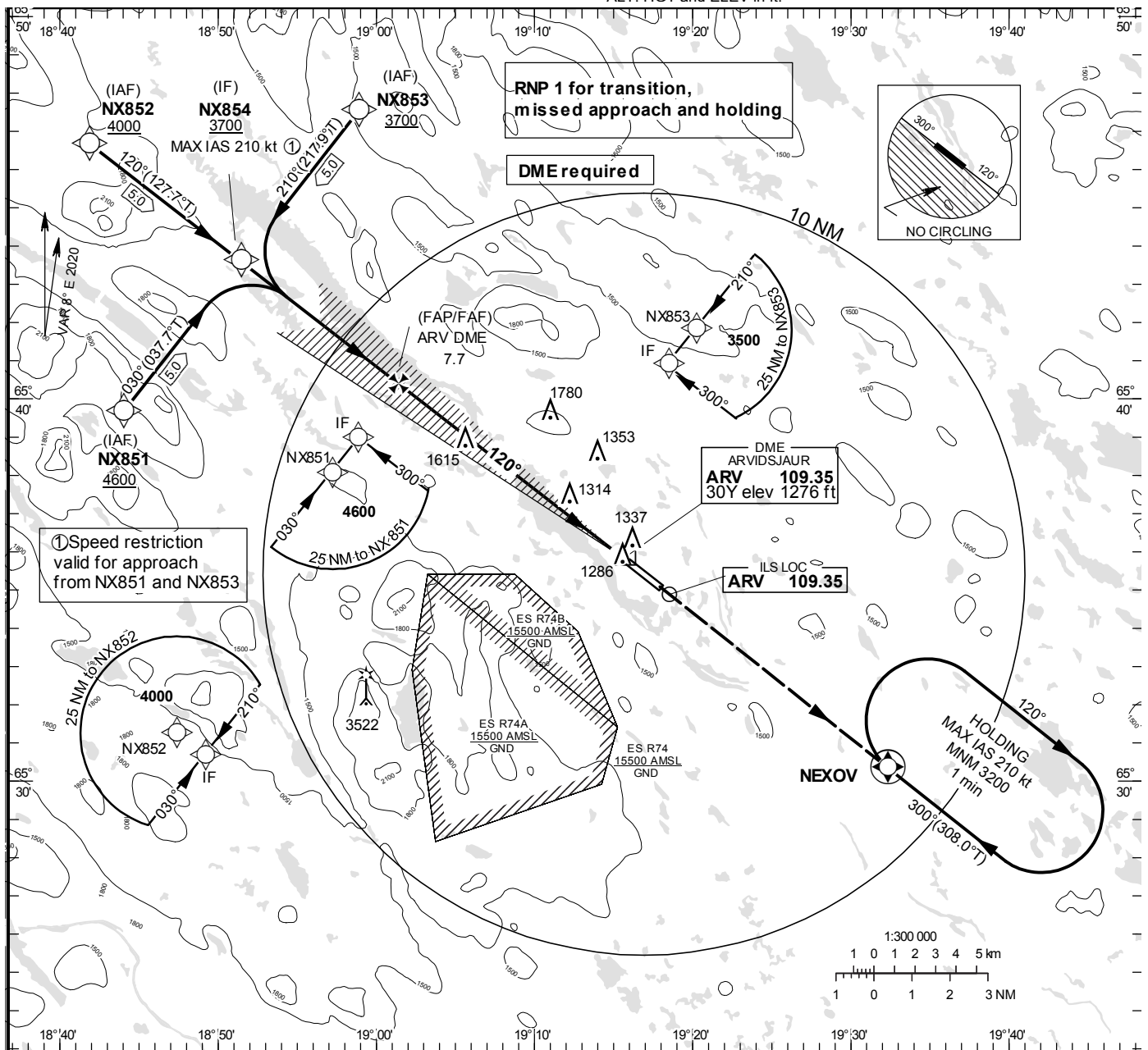


ILS z or LOC z RWY 12

ARVIDSJAUR 122.730  
TOWER/INFORMATION

THR ELEV 1242.0 ft, AD ELEV 1245 ft  
OCH are related to THR.  
Circling OCH are related to AD ELEV.  
BRG are MAG  
ALT, HGT and ELEV in ft.

INSTRUMENT  
APPROACH  
CHART - ICAO

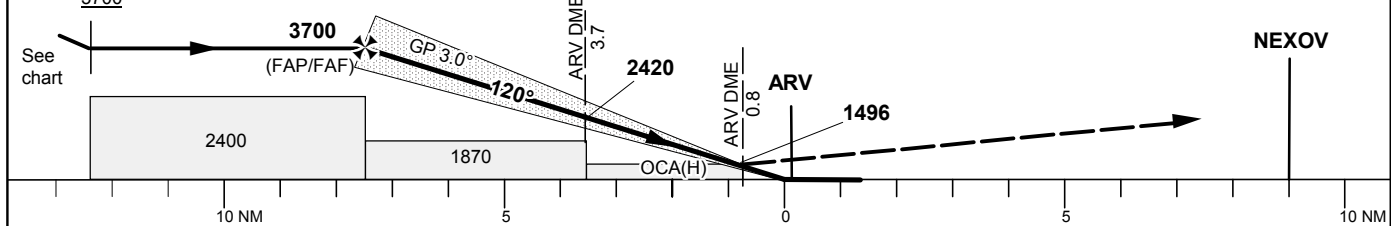


TA 5000 ft AMSL RDH 50.9 ft \*Timing not authorized for defining the MAPt

OM replaced by ARV DME 3.7  
MM replaced by ARV DME 0.8

CLIMB TO NEXOV AND JOIN NEXOV HOLDING.  
NOTE: IF UNABLE TO REACH 3200 AT NEXOV, CONTINUE CLIMB STRAIGHT AHEAD TO 3200, TURN BACK TO NEXOV AND JOIN NEXOV HOLDING.

LOC  
FAF at ARV DME 7.7 3700  
SDF: ARV DME 3.7 at 2420  
MAPt at ARV DME 0.8  
Descent grad. 5.2% (3.0°)



| OCA (H)              |            |            |            |            | Final approach  | Distance FAF-MAPt 6.9 NM* |      |      |      |      |      |      |
|----------------------|------------|------------|------------|------------|-----------------|---------------------------|------|------|------|------|------|------|
| Cat of ACFT          | A          | B          | C          | D          | DME ARV NM      | 7                         | 6    | 5    | 4    | 3    | 2    |      |
| Straight-in Approach | CAT I      | 1384 (142) | 1394 (152) | 1405 (163) | 1418 (176)      | ALT                       | 3470 | 3150 | 2830 | 2520 | 2200 | 1880 |
|                      | LOC        | 1570 (330) |            |            |                 | GS                        | kt   | 80   | 100  | 120  | 140  | 160  |
| Circling NE RWY      | 1640 (400) | 1740 (500) | 2180 (940) | 2180 (940) | Time            | min:s                     | 5:11 | 4:09 | 3:28 | 2:58 | 2:36 | 2:18 |
|                      |            |            |            |            | Rate of descent | ft/min                    | 425  | 530  | 635  | 745  | 850  | 955  |