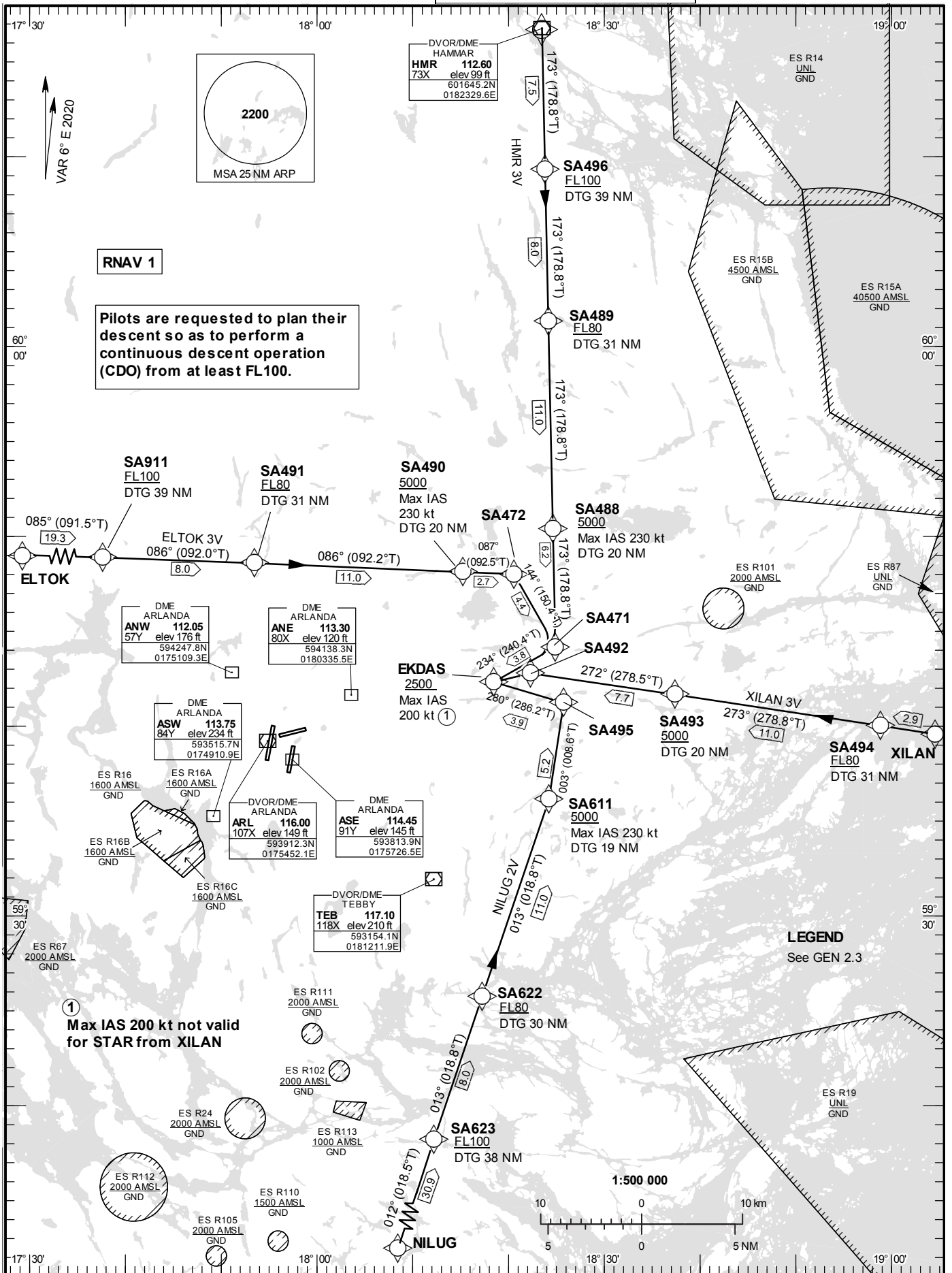


STANDARD INSTRUMENT  
ARRIVAL CHART (STAR) -  
ICAO

HGT and ALT in ft  
BRG are MAG (True)  
TA 5000 ft AMSL

ARLANDA TOWER	128.730
STOCKHOLM APPROACH	123.755
ARLANDA ATIS ARR	119.005

RNAV (DME/DME or GNSS)  
STAR RWY 26



**Prescribed Coding of RNAV STARs for RWY 26 (Closed star)**

## REMARK

Aircraft to STOCKHOLM/Arlanda shall not be operated at an airspeed of more than 250 kt IAS below FL100 unless otherwise instructed.

In case of radio communication failure, see AD 2.22 para 3.

Pilots are requested to plan their descent so as to perform a continuous descent operation (CDO) from at least FL100.

**ELTOK 3V**

Path Term	Waypoint Identifier	Fly-over	Course °M(°T)	Dist (NM)	Turn Dir	Rest Alts (ft AMSL)	Speed Limits (kt)	VPA/RDH (°/ft)	Rec Navaid	Navigation Specification
IF	ELTOK	-	-	-	-	-	-	-	-	RNAV 1
TF	SA911	-	085°(091.5°)	19.3	-	+FL100	-	-	-	RNAV 1
TF	SA491	-	086°(092.0°)	8.0	-	+FL80	-	-	-	RNAV 1
TF	SA490	-	086°(092.2°)	11.0	-	+5000	-230	-	-	RNAV 1
TF	SA472	-	087°(092.5°)	2.7	-	-	-	-	-	RNAV 1
TF	SA471	-	144°(150.4°)	4.4	-	-	-	-	-	RNAV 1
TF	EKDAS	-	234°(240.4°)	3.8	-	+2500	-200	-	-	RNAV 1

STAR instruction: ELTOK – SA911 (FL100 or above) – SA491 (FL80 or above) – SA490 (MAX IAS 230kt, 5000 ft or above) – SA472 – SA471 – EKDAS (MAX IAS 200 kt, 2500 ft or above)

**HMR 3V**

Path Term	Waypoint Identifier	Fly-over	Course °M(°T)	Dist (NM)	Turn Dir	Rest Alts (ft AMSL)	Speed Limits (kt)	VPA/RDH (°/ft)	Rec Navaid	Navigation Specification
IF	HMR	-	-	-	-	-	-	-	-	RNAV 1
TF	SA496	-	173°(178.8°)	7.5	-	+FL100	-	-	-	RNAV 1
TF	SA489	-	173°(178.8°)	8.0	-	+FL80	-	-	-	RNAV 1
TF	SA488	-	173°(178.8°)	11.0	-	+5000	-230	-	-	RNAV 1
TF	SA471	-	173°(178.8°)	6.2	-	-	-	-	-	RNAV 1
TF	EKDAS	-	234°(240.4°)	3.8	-	+2500	-200	-	-	RNAV 1

STAR instruction: HMR– SA496 (FL100 or above) – SA489 (FL80 or above) – SA488 (MAX IAS 230kt, 5000 ft or above) – SA471 – EKDAS (MAX IAS 200 kt, 2500 ft or above)

## NILUG 2V

Path Term	Waypoint Identifier	Fly-over	Course °M(°T)	Dist (NM)	Turn Dir	Rest Alts (ft AMSL)	Speed Limits (kt)	VPA/ RDH (°/ft)	Rec Navaid	Navigation Specification
IF	NILUG	-	-	-	-	-	-	-	-	RNAV 1
TF	SA623	-	012°(018.5°)	30.9	-	+FL100	-	-	-	RNAV 1
TF	SA622	-	013°(018.8°)	8.0	-	+FL80	-	-	-	RNAV 1
TF	SA611	-	013°(018.8°)	11.0	-	+5000	-230	-	-	RNAV 1
TF	SA495	-	003°(008.6°)	5.2	-	-	-	-	-	RNAV 1
TF	EKDAS	-	280°(286.2°)	3.9	-	+2500	-200	-	-	RNAV 1

STAR instruction: NILUG – SA623 (FL100 or above) – SA622 (FL80 or above) – SA611 (MAX IAS 230kt, 5000 ft or above) – SA495 - EKDAS (MAX IAS 200 kt, 2500 ft or above)

## XILAN 3V

Path Term	Waypoint Identifier	Fly-over	Course °M(°T)	Dist (NM)	Turn Dir	Rest Alts (ft AMSL)	Speed Limits (kt)	VPA/ RDH (°/ft)	Rec Navaid	Navigation Specification
IF	XILAN	-	-	-	-	-	-	-	-	RNAV 1
TF	SA494	-	273°(278.9°)	2.9	-	+FL80	-	-	-	RNAV 1
TF	SA493	-	273°(278.8°)	11.0	-	+5000	-	-	-	RNAV 1
TF	SA492	-	272°(278.5°)	7.7	-	-	-	-	-	RNAV 1
TF	EKDAS	-	250°(256.2°)	2.0	-	+2500	-	-	-	RNAV 1

STAR instruction: XILAN – SA494 (FL80 or above) – SA493 (5000 or above) – SA492 –EKDAS (2500 ft or above)