

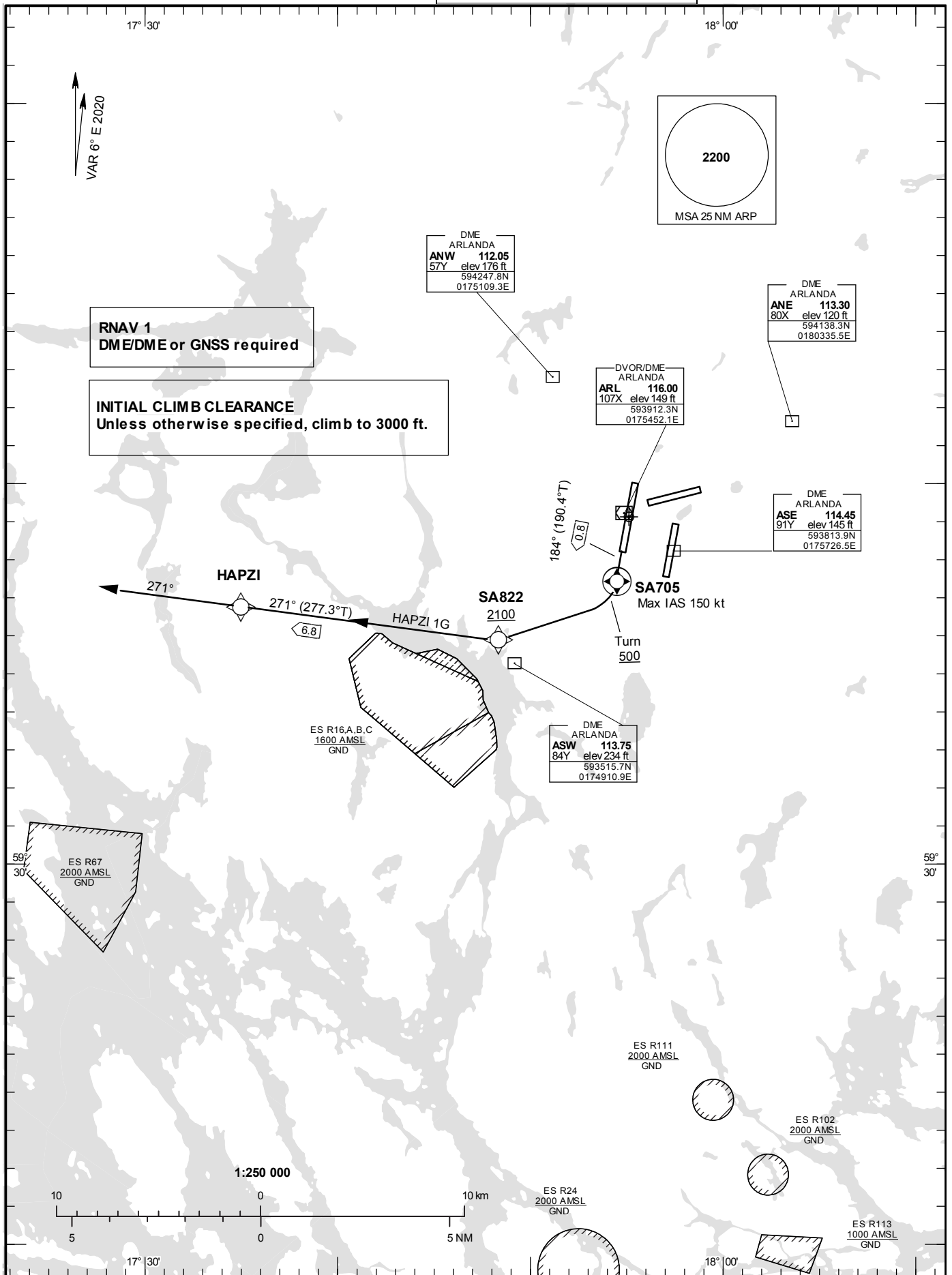
STANDARD INSTRUMENT
DEPARTURE CHART (SID) –
ICAO

HGT and ALT in ft
BRG are MAG (True)
TA 5000 ft AMSL

ARLANDA TOWER	118.505
ARLANDA ATIS DEP	121.630
STOCKHOLM APPROACH	123.755

PROP RNAV RWY 19R

HAPZI 1G



Prescribed Coding of RNAV 1 SID PROP for RWY 19R**Notes:**

INITIAL CLIMB CLEARANCE: Climb to 3000 ft unless otherwise specified.

Aircraft proceeding on RNAV SID shall use 500 ft/NM (8.2%) as a minimum gradient of climb up to 2100 ft AMSL.
Aircraft unable to conform with this procedure shall inform ATC accordingly.

ACFT unable to follow RNAV SID: Report "unable RNAV SID due RNAV type" to Clearance Delivery and "unable RNAV SID" to STOCKHOLM DEPARTURE at first contact.

Aircraft from STOCKHOLM/Arlanda shall not be operated at an airspeed of more than 250 kt IAS below FL 100 unless otherwise instructed.

Contact Frequency: Contact STOCKHOLM DEPARTURE, when so instructed by TWR, on channel indicated below.

RNAV SID HAPZI 1G (HAPZI ONE GOLF DEPARTURE)

Path Term	Waypoint Identifier	Fly-over	Course °M(°T)	Dist (NM)	Turn Dir	Rest Alts (ft AMSL)	Speed Limits (kt)	VPA/ RDH (°/ft)	Rec Navaid	Navigation Specification
CF	SA705	Y	184°(190.4°)	0.8	-	-	-150	-	ARL	RNAV 1
CA	-	-	184°(190.4°)	-	-	+500	-	-	-	RNAV 1
DF	SA822	-	-	-	R	+2100	-	-	-	RNAV 1
TF	HAPZI	-	271° (277.3°)	6.8	-	-	-	-	-	RNAV 1
VM	-	-	271°	-	-	-	-	-	-	RNAV 1

SID instruction: Climb to SA705 on course 184° (max IAS 150 kt). At or above 500ft turn right to SA822 (MNM 2100 ft) – HAPZI - Continue on heading 271°. (MNM climb gradient 8.2% (500 ft/NM) until SA822/ARL DME 4.7) **124.105 MHz or 123.755 MHz**

ACFT unable to follow RNAV SID: Report "unable RNAV SID due RNAV type" to Clearance Delivery and "unable RNAV SID" to Stockholm Departure at first contact.
Climb on track 184° to ARL DME 2. Turn right to track 240° (max IAS 150 kt in turn). At ARL DME 4.5 turn right to track 270°. Expect radar vectors to HAPZI. (MNM climb gradient 8.2% (500 ft/NM) until ARL DME 4.7)