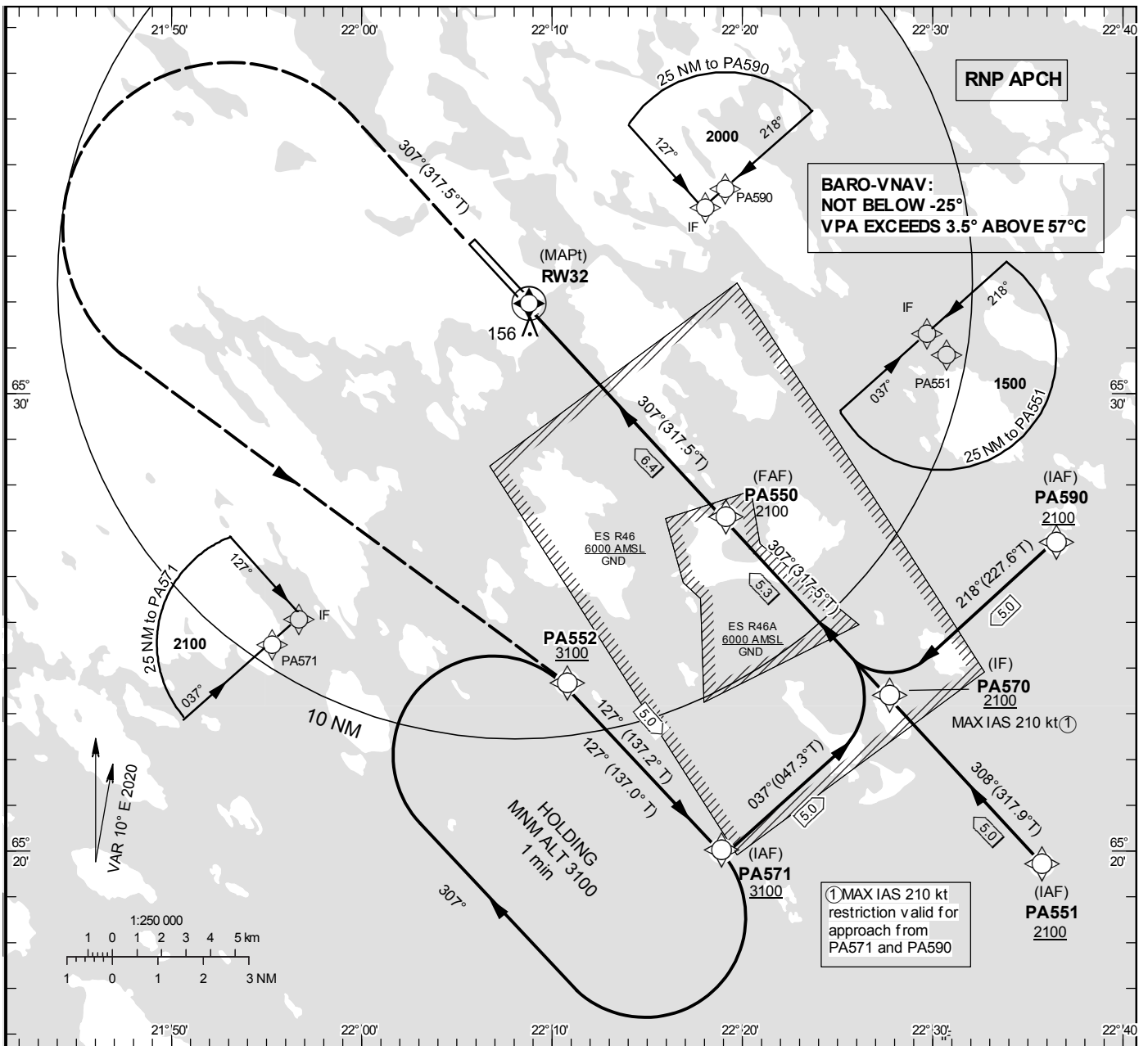


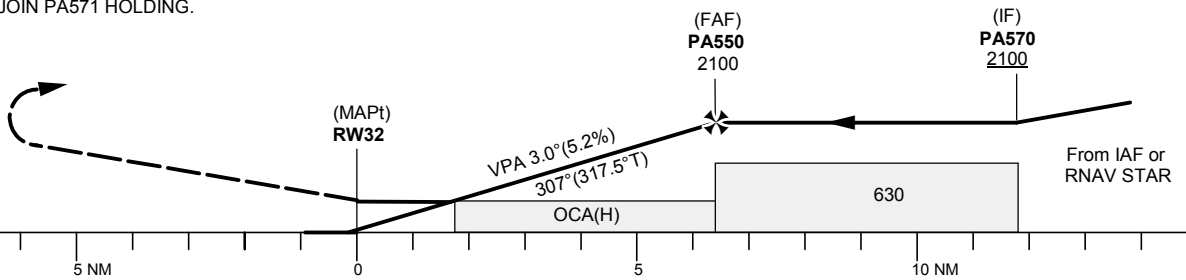
INSTRUMENT APPROACH CHART – ICAO
THR ELEV 21.0 ft, AD ELEV 65 ft
 OCH are related to THR.
 BRG are MAG (True).
 ALT, HGT and ELEV in ft.

KALLAX TOWER	128.200
KALLAX APPROACH	125.450

RNP RWY 32 (LNAV, LNAV/VNAV only)



CLIMB STRAIGHT AHEAD TO 3100
 TURN LEFT TO PA552. CONTINUE
 TO PA571 AND JOIN PA571 HOLDING.



Cat of ACFT	OCA (H)				Final approach Dist to RW32	Distance FAF-MAPt 6.4 NM						
	A	B	C	D		2	3	4	5	6		
LNAV/VNAV	286 (265)	298 (277)	307 (286)	317 (296)	ALT	710	1030	1340	1660	1980		
LNAV	410 (390)				GS	kt	80	100	120	140	160	180
					Rate of descent	ft/min	425	530	635	745	850	955

RNP RWY 32 via PA590

Path Term	Waypoint Identifier	Fly-over	Course °M(°T)	Dist (NM)	Turn Dir	Rest Alts (ft AMSL)	Speed Limits (kt)	VPA/RDH (°/ft)	Rec Navaid	Navigation Specification
IF	PA590	-	-	-	-	+2100	-	-	-	RNP APCH
TF	PA570	-	218°(227.6°)	5.0	-	+2100	-210	-	-	RNP APCH

RNP RWY 32 via PA571

Path Term	Waypoint Identifier	Fly-over	Course °M(°T)	Dist (NM)	Turn Dir	Rest Alts (ft AMSL)	Speed Limits (kt)	VPA/RDH (°/ft)	Rec Navaid	Navigation Specification
IF	PA571	-	-	-	-	+3100	-	-	-	RNP APCH
TF	PA570	-	037°(047.3°)	5.0	-	+2100	-210	-	-	RNP APCH

RNP RWY 32 via PA551

Path Term	Waypoint Identifier	Fly-over	Course °M(°T)	Dist (NM)	Turn Dir	Rest Alts (ft AMSL)	Speed Limits (kt)	VPA/RDH (°/ft)	Rec Navaid	Navigation Specification
IF	PA551	-	-	-	-	+2100	-	-	-	RNP APCH
TF	PA570	-	308°(317.9°)	5.0	-	+2100	-	-	-	RNP APCH

Path Term	Waypoint Identifier	Fly-over	Course °M(°T)	Dist (NM)	Turn Dir	Rest Alts (ft AMSL)	Speed Limits (kt)	VPA/RDH (°/ft)	Rec Navaid	Navigation Specification
IF	PA570	-	-	-	-	+2100	-	-	-	RNP APCH
TF	PA550	-	307°(317.5°)	5.3	-	@2100	-	-	-	RNP APCH
TF	RW32	Y	307°(317.5°)	6.4	-	@71	-	-3.0/50	-	RNP APCH
CA	-	-	307°(317.5°)	-	-	+3100	-	-	-	RNP APCH
DF	PA552	-	-	-	L	-	-	-	-	RNP APCH
TF	PA571	-	127°(137.2°)	5.0	-	+3100	-	-	-	RNP APCH

Holding PA571

Path Term	Waypoint Identifier	Fly-over	Course °M(°T)	Dist (NM)	Turn Dir	Rest Alts (ft AMSL)	Speed Limits (kt)	VPA/RDH (°/ft)	Rec Navaid	Navigation Specification
HM	PA571	Y	127°(137.0°)	-	R	+3100	-	-	-	RNAV 1