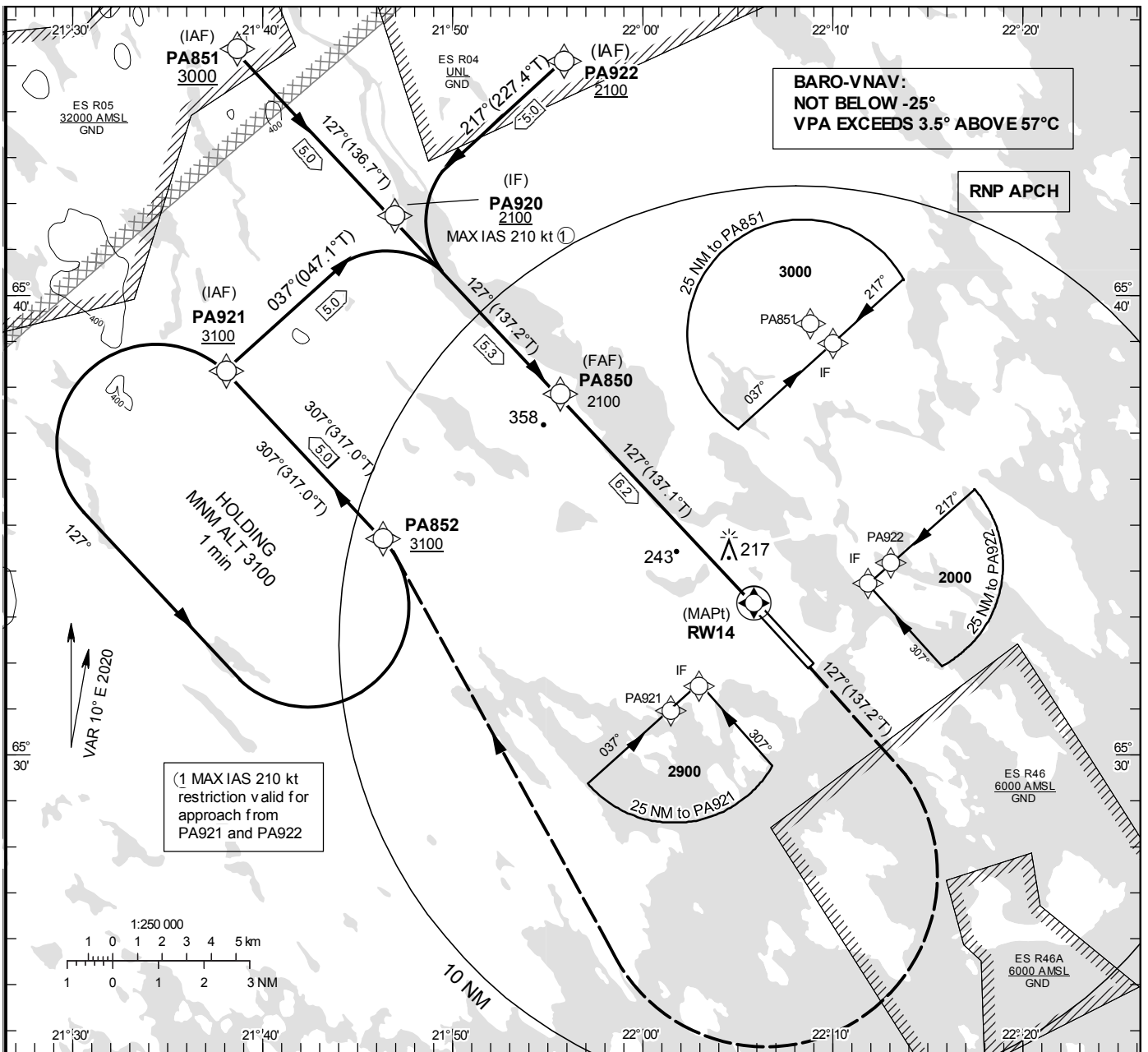


**INSTRUMENT  
APPROACH  
CHART – ICAO**

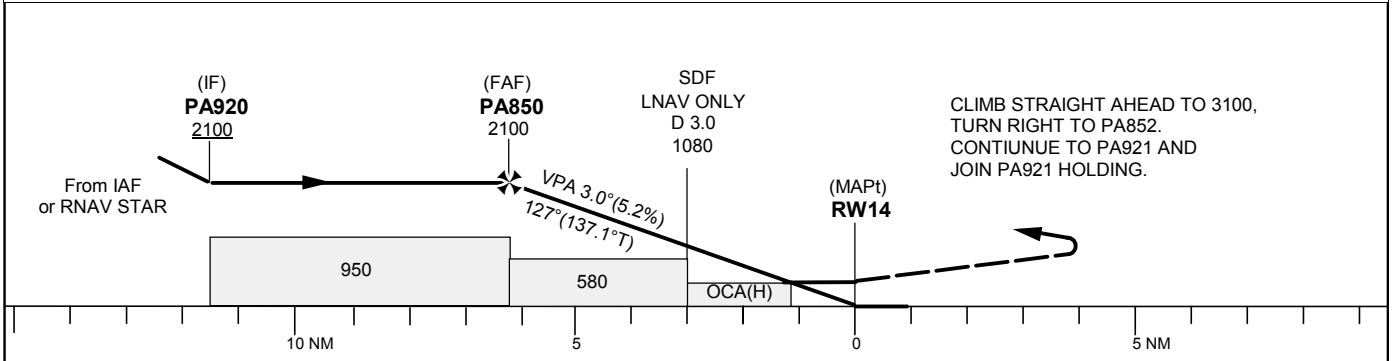
**THR ELEV 65.3 ft, AD ELEV 65 ft**  
 OCH are related to THR.  
 BRG are MAG (True).  
 ALT, HGT and ELEV in ft.

KALLAX TOWER	128.200
KALLAX APPROACH	125.450

**RNP RWY 14  
(LNAV, LNAV/VNAV only)**



TA 5000 ft AMSL RDH 50 ft



Cat of ACFT	OCA (H)				Final approach Dist to RW14	Distance FAF-MAPt 6.2 NM						
	A	B	C	D		6	5	4	3	2		
LNAV/VNAV	348 (283)	360 (295)	368 (303)	378 (313)	ALT	2030	1710	1390	1070	750		
LNAV	490 (430)				GS	kt	80	100	120	140	160	180
					Rate of descent	ft/min	425	530	635	745	850	955

**RNP RWY 14 via PA921**

Path Term	Waypoint Identifier	Fly-over	Course °M(°T)	Dist (NM)	Turn Dir	Rest Alts (ft AMSL)	Speed Limits (kt)	VPA/RDH (°/ft)	Rec Navaid	Navigation Specification
IF	PA921	-	-	-	-	+3100	-	-	-	RNP APCH
TF	PA920	-	037°(047.1°)	5.0	-	+2100	-210	-	-	RNP APCH

**RNP RWY 14 via PA922**

Path Term	Waypoint Identifier	Fly-over	Course °M(°T)	Dist (NM)	Turn Dir	Rest Alts (ft AMSL)	Speed Limits (kt)	VPA/RDH (°/ft)	Rec Navaid	Navigation Specification
IF	PA922	-	-	-	-	+2100	-	-	-	RNP APCH
TF	PA920	-	217°(227.4°)	5.0	-	+2100	-210	-	-	RNP APCH

**RNP RWY 14 via PA851**

Path Term	Waypoint Identifier	Fly-over	Course °M(°T)	Dist (NM)	Turn Dir	Rest Alts (ft AMSL)	Speed Limits (kt)	VPA/RDH (°/ft)	Rec Navaid	Navigation Specification
IF	PA851	-	-	-	-	+3000	-	-	-	RNP APCH
TF	PA920	-	127°(136.7°)	5.0	-	+2100	-	-	-	RNP APCH

Path Term	Waypoint Identifier	Fly-over	Course °M(°T)	Dist (NM)	Turn Dir	Rest Alts (ft AMSL)	Speed Limits (kt)	VPA/RDH (°/ft)	Rec Navaid	Navigation Specification
IF	PA920	-	-	-	-	+2100	-	-	-	RNP APCH
TF	PA850	-	127°(137.2°)	5.3	-	@2100	-	-	-	RNP APCH
TF	RW14	Y	127°(137.1°)	6.2	-	@115	-	-3.0/50	-	RNP APCH
CA	-	-	127°(137.2°)	-	-	+3100	-	-	-	RNP APCH
DF	PA852	-	-	-	R	-	-	-	-	RNP APCH
TF	PA921	-	307°(317.0°)	5.0	-	+3100	-	-	-	RNP APCH

**Holding PA921**

Path Term	Waypoint Identifier	Fly-over	Course °M(°T)	Dist (NM)	Turn Dir	Rest Alts (ft AMSL)	Speed Limits (kt)	VPA/RDH (°/ft)	Rec Navaid	Navigation Specification
HM	PA921	Y	307°(317.0°)	-	L	+3100	-	-	-	RNAV 1