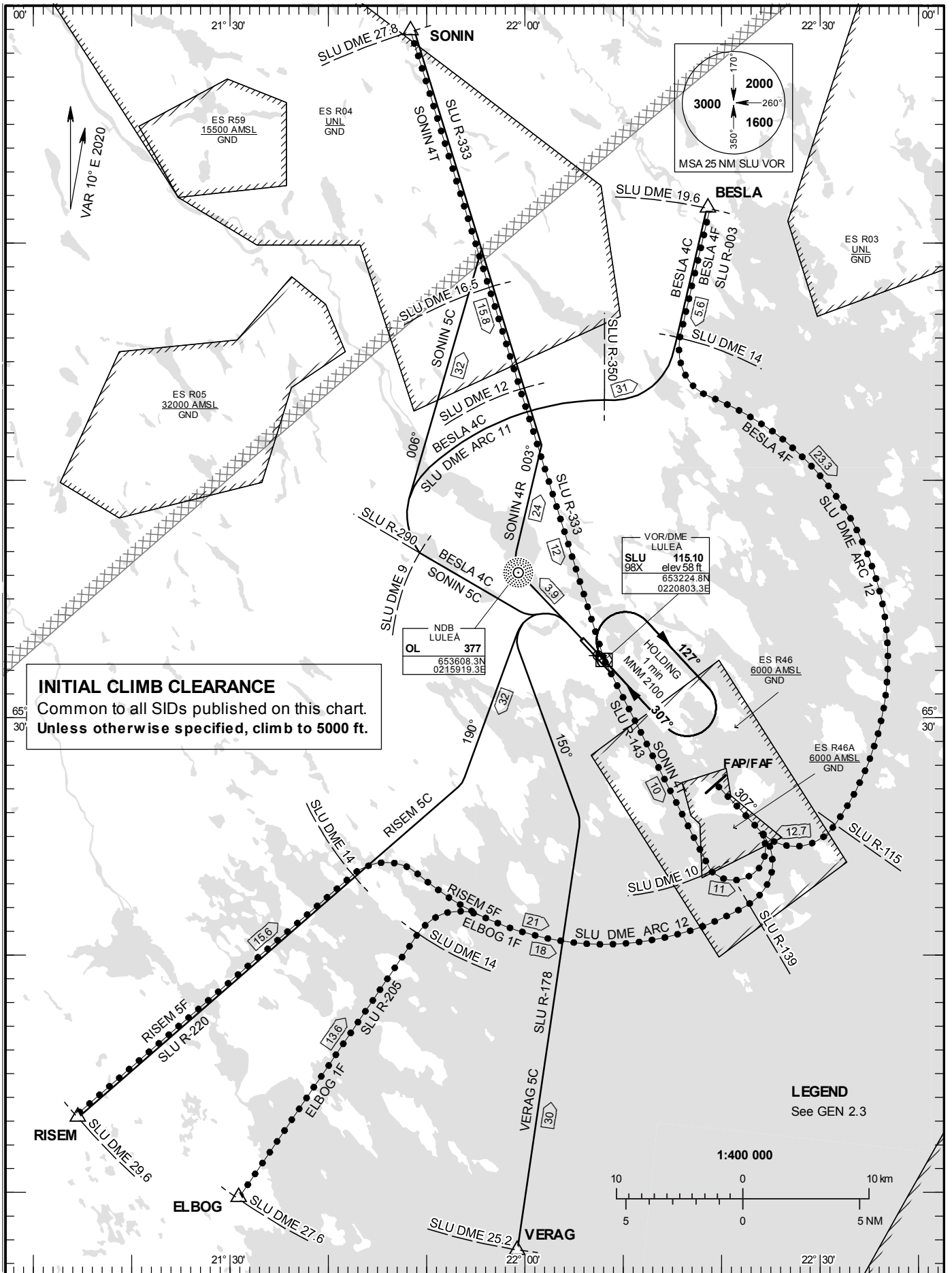


STANDARD INSTRUMENT
DEPARTURE AND ARRIVAL
CHART (SID/STAR) - ICAO

HGT and ALT in ft
BRG are MAG
TA 5000 ft AMSL

KALLAX TOWER	128.200
KALLAX APPROACH	125.450

RWY 32

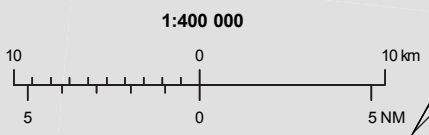


INITIAL CLIMB CLEARANCE
Common to all SIDs published on this chart.
Unless otherwise specified, climb to 5000 ft.

VOR/DME
LULEÅ
SLU
98X elev 58 ft
653224.8N
0220803.3E

NDB
LULEÅ
OL 377
653608.3N
0215919.3E

LEGEND
See GEN 2.3



DEPARTURE (SID) RWY 32

REMARK

MNM climb gradient required by ATC: Aircraft proceeding on SID shall use 6.6 % (400 ft/NM). Aircraft unable to conform to this procedure shall inform ATC accordingly.

BESLA FOUR CHARLIE DEPARTURE (BESLA 4C)

Straight ahead to 1000 ft. Turn left, intercept SLU R-290 and proceed to SLU DME 9.0. Turn right and proceed on SLU DME ARC 11.0. At SLU R-350 turn left, intercept SLU R-003 and proceed to BESLA.

RISEM FIVE CHARLIE DEPARTURE (RISEM 5C)

Straight ahead to 1000 ft. Turn left to track 190°, intercept SLU R-220 and proceed to RISEM.

SONIN FOUR ROMEO DEPARTURE (SONIN 4R)

(For PROP ACFT only.)

Straight ahead to OL, turn right to track 003°, intercept SLU R-333 and proceed to SONIN.

SONIN FIVE CHARLIE DEPARTURE (SONIN 5C)

Straight ahead to 1000 ft. Turn left, intercept SLU R-290 and proceed to SLU DME 9.0. Turn right to track 006° and intercept SLU R-333 and proceed to SONIN.

VERAG FIVE CHARLIE DEPARTURE (VERAG 5C)

Straight ahead to 1000 ft. Turn left to track 150°, intercept SLU R-178 and proceed to VERAG.

ARRIVAL (STAR) RWY 32

BESLA FOUR FOXTROT ARRIVAL (BESLA 4F)

At BESLA intercept SLU R-003 and proceed to SLU DME 14.0. Turn left and proceed on SLU DME ARC 12. At SLU R-115 turn right and intercept LOC SPA, not below 2100 ft until FAP/FAF.

ELBOG ONE FOXTROT ARRIVAL (ELBOG 1F)

At ELBOG intercept SLU R-205 and proceed to SLU DME 14.0, not below 2500 ft. Turn right and proceed on SLU DME ARC 12. At SLU R-139, turn left and intercept LOC SPA, not below 2100 ft until FAP/FAF.

RISEM FIVE FOXTROT ARRIVAL (RISEM 5F)

At RISEM intercept SLU R-220 and proceed to SLU DME 14.0, not below 2500 ft. Turn right and proceed on SLU DME ARC 12. At SLU R-139 turn left and intercept LOC SPA, not below 2100 ft until FAP/FAF.

SONIN FOUR TANGO ARRIVAL (SONIN 4T)

(For PROP ACFT only.)

At SONIN intercept SLU R-333 and proceed to SLU, not below 2500 ft. At SLU intercept SLU R-143 and proceed to SLU DME 10.0. Turn left to intercept LOC SPA, not below 2100 ft until FAP/FAF.