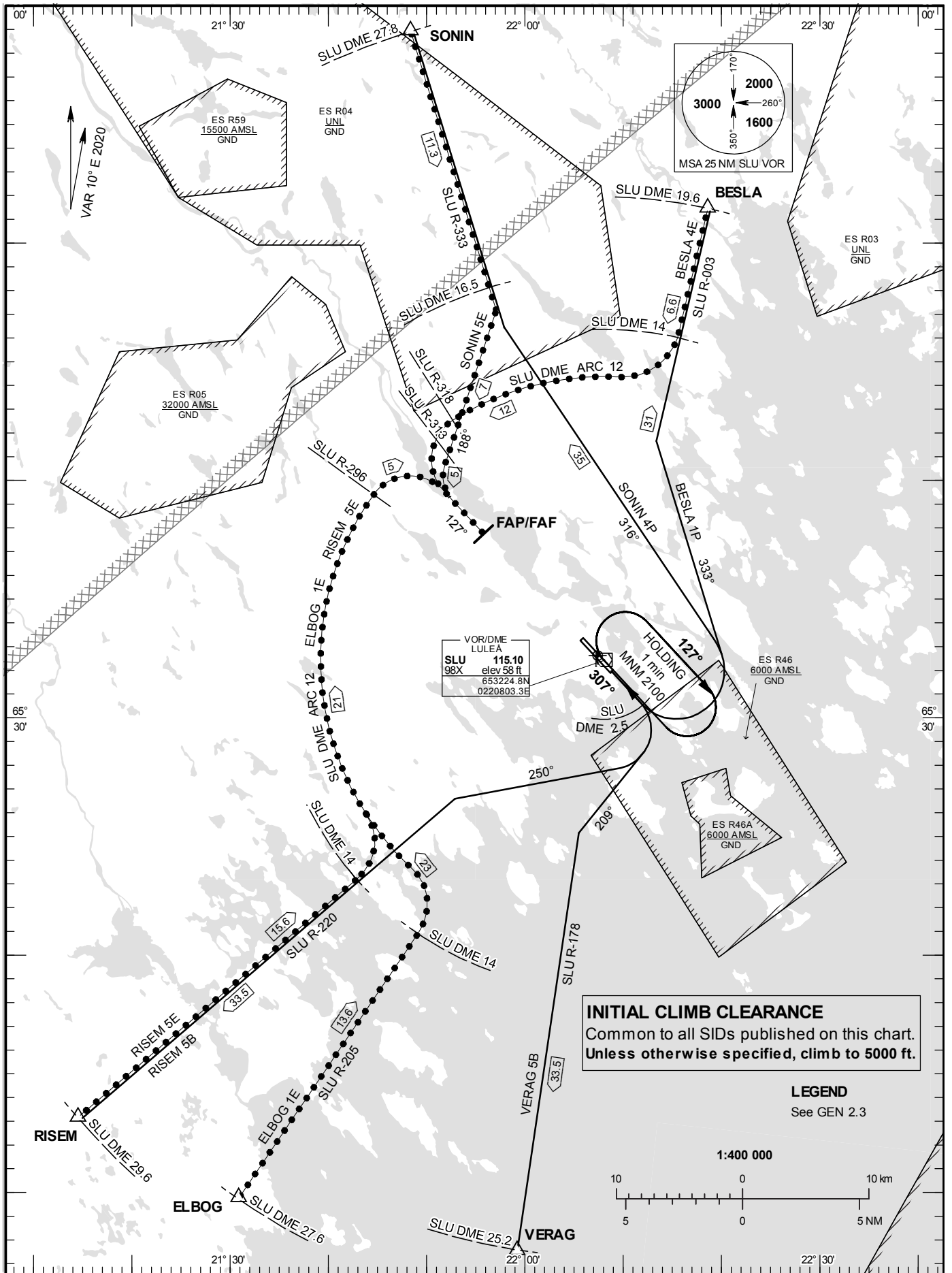


STANDARD INSTRUMENT
DEPARTURE AND ARRIVAL
CHART (SID/STAR) - ICAO

HGT and ALT in ft
BRG are MAG
TA 5000 ft AMSL

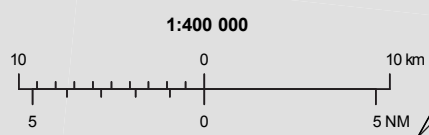
KALLAX TOWER	128.200
KALLAX APPROACH	125.450

RWY 14



INITIAL CLIMB CLEARANCE
Common to all SIDs published on this chart.
Unless otherwise specified, climb to 5000 ft.

LEGEND
See GEN 2.3



DEPARTURE (SID) RWY 14

REMARK

MNM climb gradient required by ATC: Aircraft proceeding on SID shall use 6.6% (400 ft/NM). Aircraft unable to confirm to this procedure shall inform ATC accordingly

BESLA ONE PAPA DEPARTURE (BESLA 1P)

(For PROP ACFT only.)

Straight ahead to SLU DME 2.5 (MNM 230 ft/NM until SLU DME 2.5). Turn left to track 333°, intercept SLU R-003 and proceed to BESLA..

RISEM FIVE BRAVO DEPARTURE (RISEM 5B)

Straight ahead to SLU DME 2.5. Turn right to track 250°, intercept SLU R-220 and proceed to RISEM.

SONIN FOUR PAPA DEPARTURE (SONIN 4P)

(For PROP ACFT only.)

Straight ahead to SLU DME 2.5 (MNM 230 ft/NM until SLU DME 2.5). Turn left to track 316°, intercept SLU R-333 and proceed to SONIN.

VERAG FIVE BRAVO DEPARTURE (VERAG 5B)

Straight ahead to SLU DME 2.5. Turn right to track 209°, intercept SLU R-178 and proceed to VERAG.

ARRIVAL (STAR) RWY 14

BESLA FOUR ECHO ARRIVAL (BESLA 4E)

At BESLA intercept SLU R-003 and proceed to SLU DME 14.0. Turn right and proceed on SLU DME ARC 12. At SLU R-318, turn left and intercept LOC PA, not below 2100 ft until FAP/FAF.

ELBOG ONE ECHO ARRIVAL (ELBOG 1E)

At ELBOG intercept SLU R-205 and proceed to SLU DME 14.0, not below 2500 ft. Turn left and proceed on SLU DME ARC 12. At SLU R-296, turn right and intercept LOC PA, not below 2100 ft until FAP/FAF.

RISEM FIVE ECHO ARRIVAL (RISEM 5E)

At RISEM intercept SLU R-220 and proceed to SLU DME 14.0, not below 2500 ft. Turn left and proceed on SLU DME ARC 12. At SLU R-296, turn right to intercept LOC PA, not below 2100 ft until FAP/FAF.

SONIN FIVE ECHO ARRIVAL (SONIN 5E)

At SONIN intercept SLU R-333 and proceed to SLU DME 16.5, not below 2500 ft. Turn right to track 188°. At SLU R-313, turn left to intercept LOC PA not below 2100 ft until FAP/FAF.