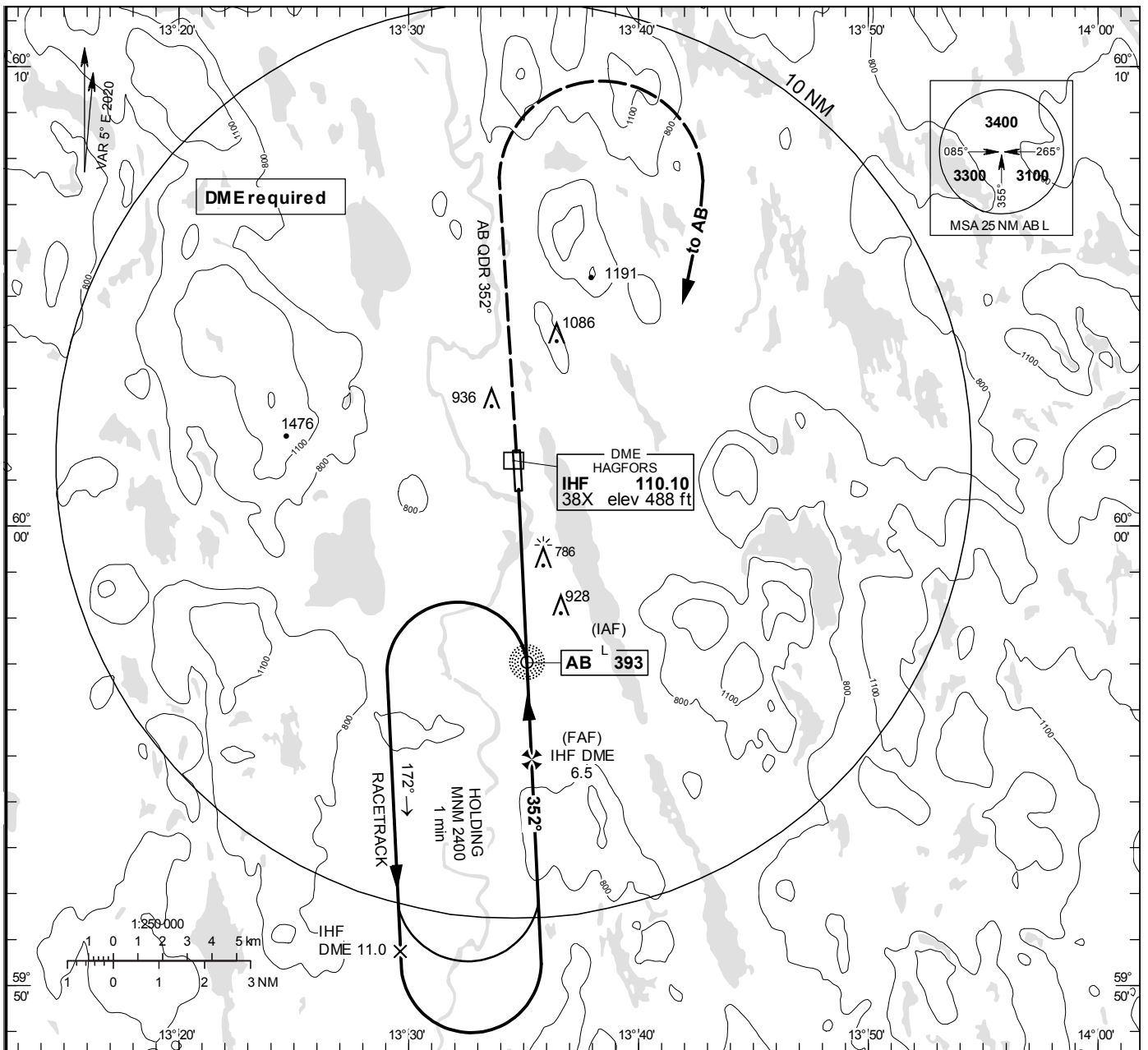


**INSTRUMENT  
APPROACH  
CHART – ICAO**

**THR ELEV 469 ft, AD ELEV 474 ft**  
 OCH are related to THR.  
 Circling OCH are related to AD ELEV.  
 BRG are MAG  
 ALT, HGT and ELEV in ft.

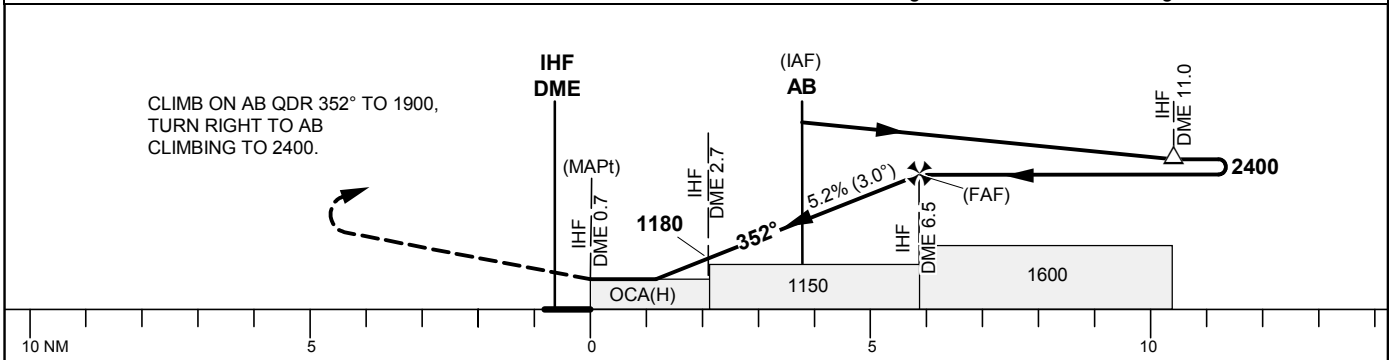
HAGFORS  
 INFORMATION 122.230

**NDB RWY 36 (Cat A/B)**



TA 5000 ft AMSL

\*Timing not authorized for defining the MAPt



| OCA (H)              |            | Final approach | Distance FAF-MAPt 5.8 NM* |        |      |      |      |
|----------------------|------------|----------------|---------------------------|--------|------|------|------|
| Cat of ACFT          | A          | B              | DME IHF NM                | 3      | 4    | 5    | 6    |
| Straight-in Approach | 1040 (580) |                | ALT                       | 1270   | 1590 | 1910 | 2230 |
| Circling             | 1240 (770) | 1390 (920)     | GS                        | kt     | 80   | 100  | 120  |
|                      |            |                | Time                      | min:s  | 4:23 | 3:30 | 2:55 |
|                      |            |                | Rate of descent           | ft/min | 425  | 530  | 635  |