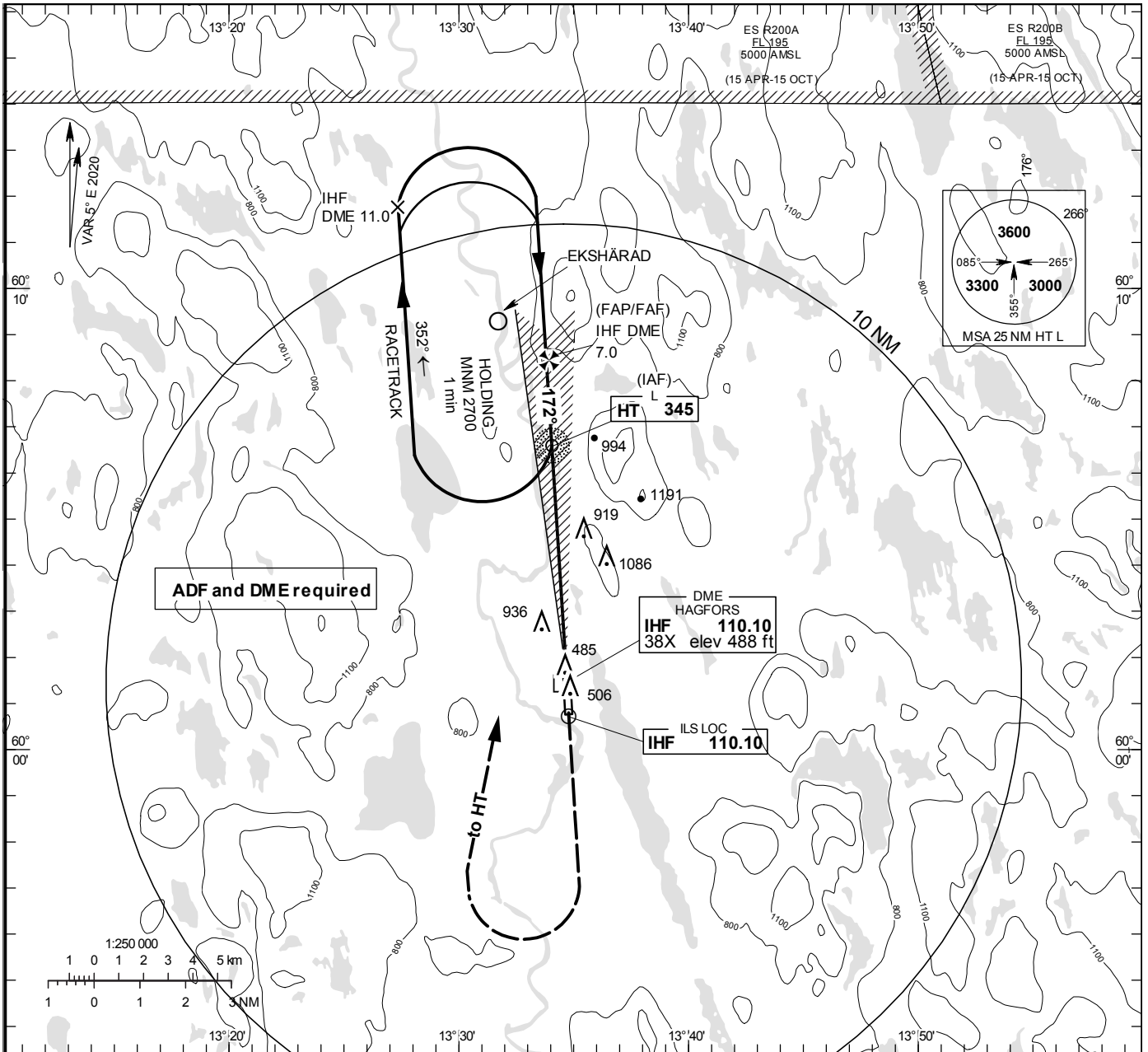


INSTRUMENT APPROACH CHART – ICAO

THR ELEV 474.3 ft, AD ELEV 474 ft
 OCH are related to THR.
 Circling OCH are related to AD ELEV.
 BRG are MAG
 ALT. HGT and ELEV in ft.

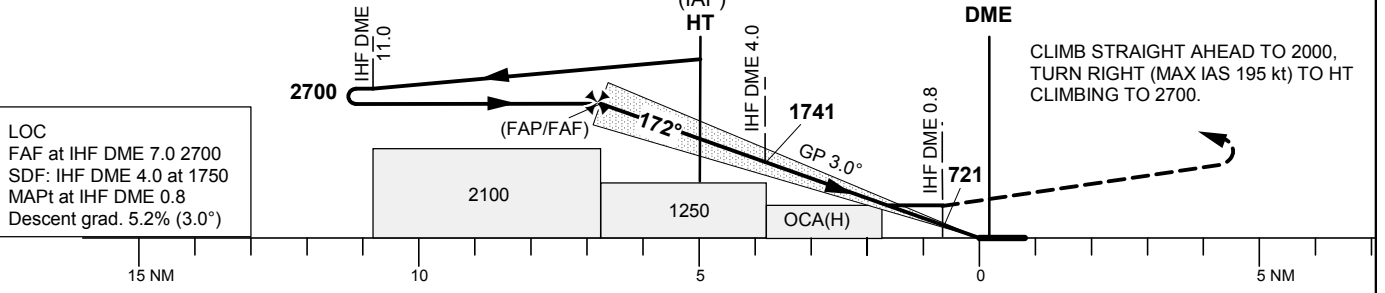
HAGFORS INFORMATION 122.230

ILS or LOC RWY 18



TA 5000 ft AMSL RDH 49.9 ft Missed approach turn limited to 195kt IAS maximum *Timing not authorized for defining the MAPt

OM replaced by IHF DME 4.0
 MM replaced by IHF DME 0.8



LOC
 FAF at IHF DME 7.0 2700
 SDF: IHF DME 4.0 at 1750
 MAPt at IHF DME 0.8
 Descent grad. 5.2% (3.0°)

OCA (H)				Final approach	LOC Distance FAF-MAPt 6.2 NM*					
Cat of ACFT	A	B	C	DME IHF NM	6	5	4	3		
Straight-in Approach	CAT I	626 (151)	635 (160)	646 (171)	ALT	2380	2060	1740	1420	
	LOC	1170 (700)			GS	kt	80	100	120	140
Circling	1240 (770)			Time	min:s	4:40	3:44	3:06	2:40	2:20
	1390 (920)			Rate of descent	ft/min	425	530	635	745	850
1590 (1120)										