

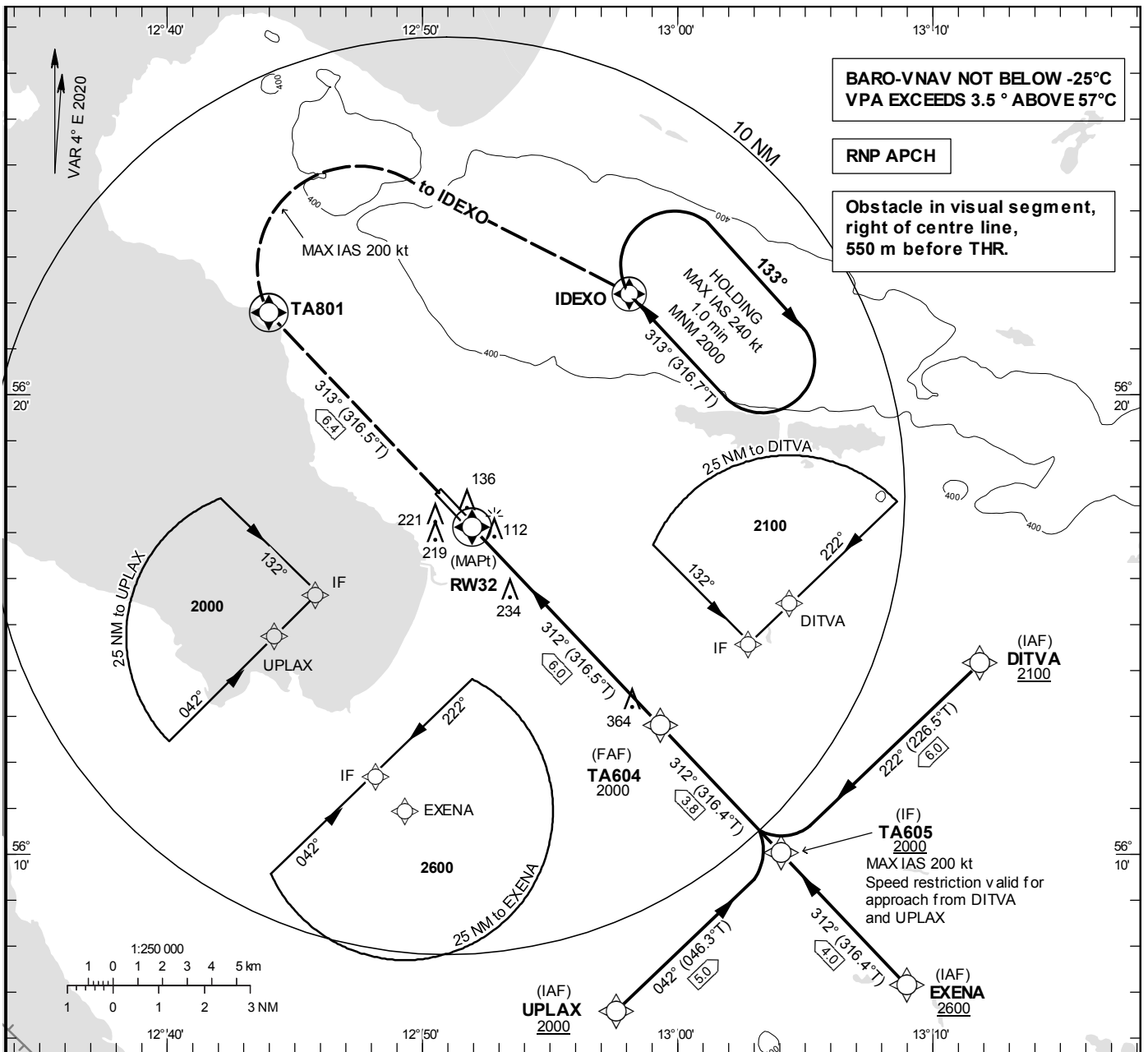
INSTRUMENT APPROACH CHART – ICAO

THR ELEV 52 ft, AD ELEV 62 ft
 OCH are related to THR.
 BRG are MAG (True).
 ALT, HGT and ELEV in ft.

ÄNGELHOLM TOWER	127.105
ÄNGELHOLM APPROACH	132.455

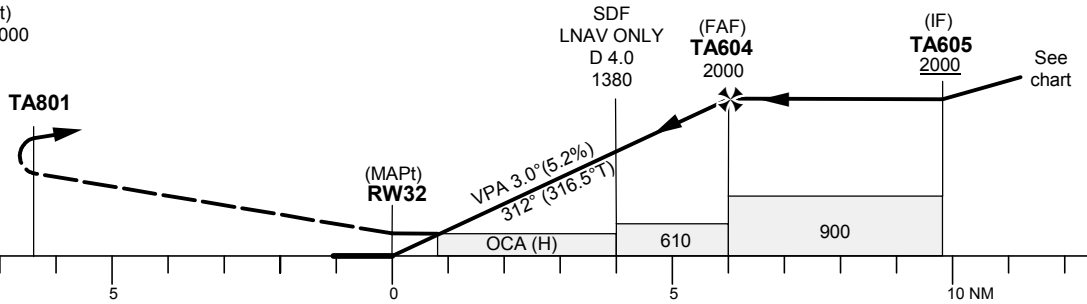
RNP RWY 32

EGNOS Ch 48707 E 32A



TA 5000 ft AMSL RDH 50 ft

CLIMB STRAIGHT AHEAD TO TA801.
 TURN RIGHT (MAX IAS 200 kt)
 AND CONTINUE CLIMB TO 2000
 TO HOLD AT IDEXO.



OCA (H)					Final approach	Distance FAF-MAPt 6.0 NM						
Cat of ACFT	A	B	C	D	Dist to RW32	2	3	4	5			
LPV	266 (214)	278 (226)	287 (235)	297 (245)	ALT	740	1060	1370	1690			
LNAV/VNAV	342 (290)	354 (302)	362 (310)	382 (330)	GS	kt	80	100	120	140	160	180
LNAV	480 (430)				Rate of descent	ft/min	425	530	635	745	850	955

Instrument Approach Procedure Coding Tables

RNP RWY 32 via DITVA

Path Desc	Waypoint Identifier	Fly-over	Course °M(°T)	Dist (NM)	Turn Dir	Altitude	Speed	VPA/RDH	Rec Navaid	Navigation Specification
IF	DITVA	-	-	-	-	+2100	-	-	-	RNP APCH
TF	TA605	-	222°(226.5°)	6.0	-	+2000	-200	-	-	RNP APCH

RNP RWY 32 via EXENA

Path Desc	Waypoint Identifier	Fly-over	Course °M(°T)	Dist (NM)	Turn Dir	Altitude	Speed	VPA/RDH	Rec Navaid	Navigation Specification
IF	EXENA	-	-	-	-	+2600	-	-	-	RNP APCH
TF	TA605	-	312°(316.4°)	4.0	-	+2000	-	-	-	RNP APCH

RNP RWY 32 via UPLAX

Path Desc	Waypoint Identifier	Fly-over	Course °M(°T)	Dist (NM)	Turn Dir	Altitude	Speed	VPA/RDH	Rec Navaid	Navigation Specification
IF	UPLAX	-	-	-	-	+2000	-	-	-	RNP APCH
TF	TA605	-	042°(046.3°)	5.0	-	+2000	-200	-	-	RNP APCH

Path Desc	Waypoint Identifier	Fly-over	Course °M(°T)	Dist (NM)	Turn Dir	Altitude	Speed	VPA/RDH	Rec Navaid	Navigation Specification
IF	TA605	-	-	-	-	+2000	-	-	-	RNP APCH
TF	TA604	-	312°(316.4°)	3.8	-	@2000	-	-	-	RNP APCH
TF	RW32	Y	312°(316.5°)	6.0	-	@102	-	-3.0/50	-	RNP APCH
TF	TA801	Y	313°(316.5°)	6.4	-	-	-	-	-	RNP APCH
DF	IDEXO	Y	-	-	R	-	-200	-	-	RNP APCH

ESTA Holding IDEXO

Path Desc	Waypoint Identifier	Fly-over	Course °M(°T)	Dist (NM)	Turn Dir	Altitude	Speed	VPA/RDH	Rec Navaid	Navigation Specification
HM	IDEXO	Y	313°(316.7°)	-	R	+2000	-240	-	-	RNAV 1

FAS Data Block

RNP RWY 32

Input data

Operation Type	0
SBAS Provider	1 (EGNOS)
Airport Identifier	ESTA
Runway	32
Runway Letter	0 (None)
Approach Performance Designator	0
Route Indicator	
Reference Path Data Selector	0
Reference Path Identifier	E32A
LTP/FTP Latitude	561706.5950N
LTP/FTP Longitude	0125157.1565E
LTP/FTP Ellipsoidal Height (metres)	52.5
FPAP Latitude	561752.1130N
Delta FPAP Latitude (seconds)	45.5180
FPAP Longitude	0125039.1470E
Delta FPAP Longitude (seconds)	-78.0095
Threshold Crossing Height	50.0
TCH Units Selector	0 (feet)
Glidepath Angle (degrees)	3.00
Course Width (metres)	105.00
Length Offset (metres)	0
HAL (metres)	40.0
VAL (metres)	50.0

Output data

Data Block	10 01 14 13 05 20 00 00 01 32 33 05 46 AC 27 18 C9 7C 85 05 0D 16 9C 63 01 8D 9E FD F4 01 2C 01 64 00 C8 FA 31 93 33 20
Calculated CRC Value	31933320

Required Additional Data

ICAO Code	ES
LTP/FTP Orthometric Height (metres)	15.8