
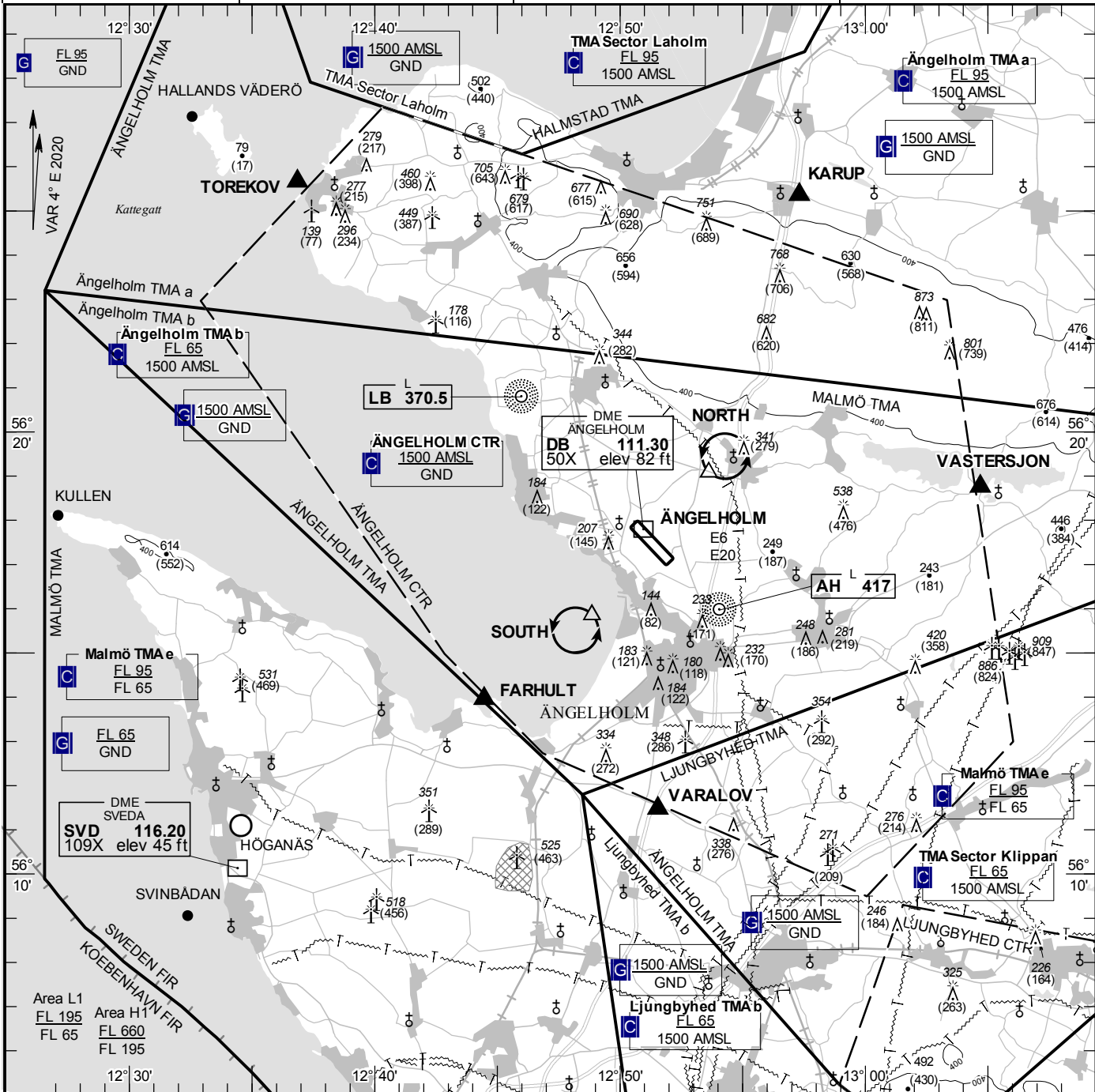


<b>VISUAL APPROACH CHART - ICAO</b> 1:250000 	<b>AD ELEV 62 FEET</b> ELEV and ALT in ft HGT in ft above AD ELEV <b>TA 5000 AMSL</b>	<b>ÄNGELHOLM TOWER</b> 127.105 <b>ÄNGELHOLM APPROACH</b> 132.455	<b>AD 2 ESTA 6-1</b> <b>ÄNGELHOLM SWEDEN</b>
--	--	---	---



**Communication failure**

- 1 SQUAWK 7600
- 2 Enter CTR via FARHULT – Holding SOUTH at or below 1500 ft AMSL to traffic circuit. Transmit blind your intentions.
- 3 Flash LDG-lights and watch TWR for optical signals.

RWY NR	THR ELEV	PAPI (MEHT)
14	60.2 ft	Left/3.00° (37 ft)
32	52 ft	Left/3.00° (54 ft)

**Entry / exit point**

TOREKOV	562539N 0123651E
KARUP	562521N 0125719E
VASTERSJON	561845N 0130441E
VARALOV	561128N 0125133E
FARHULT	561357N 0124428E

**Remark**

Right hand traffic circuit when RWY 32 is in use.

Sector LAHOLM and sector KLIPPAN: ATC provider, see ENR 2.1

**Legend**  
See GEN 2.3

**Holding**

- NORTH:** Hold at Hjärnarp church, north east of point 561903N 0125338E
- SOUTH:** Hold west camping ground, south west of point 561550N 0124851E