

**VISUAL APPROACH CHART - ICAO**

1:250000



**AD ELEV 597 FEET**

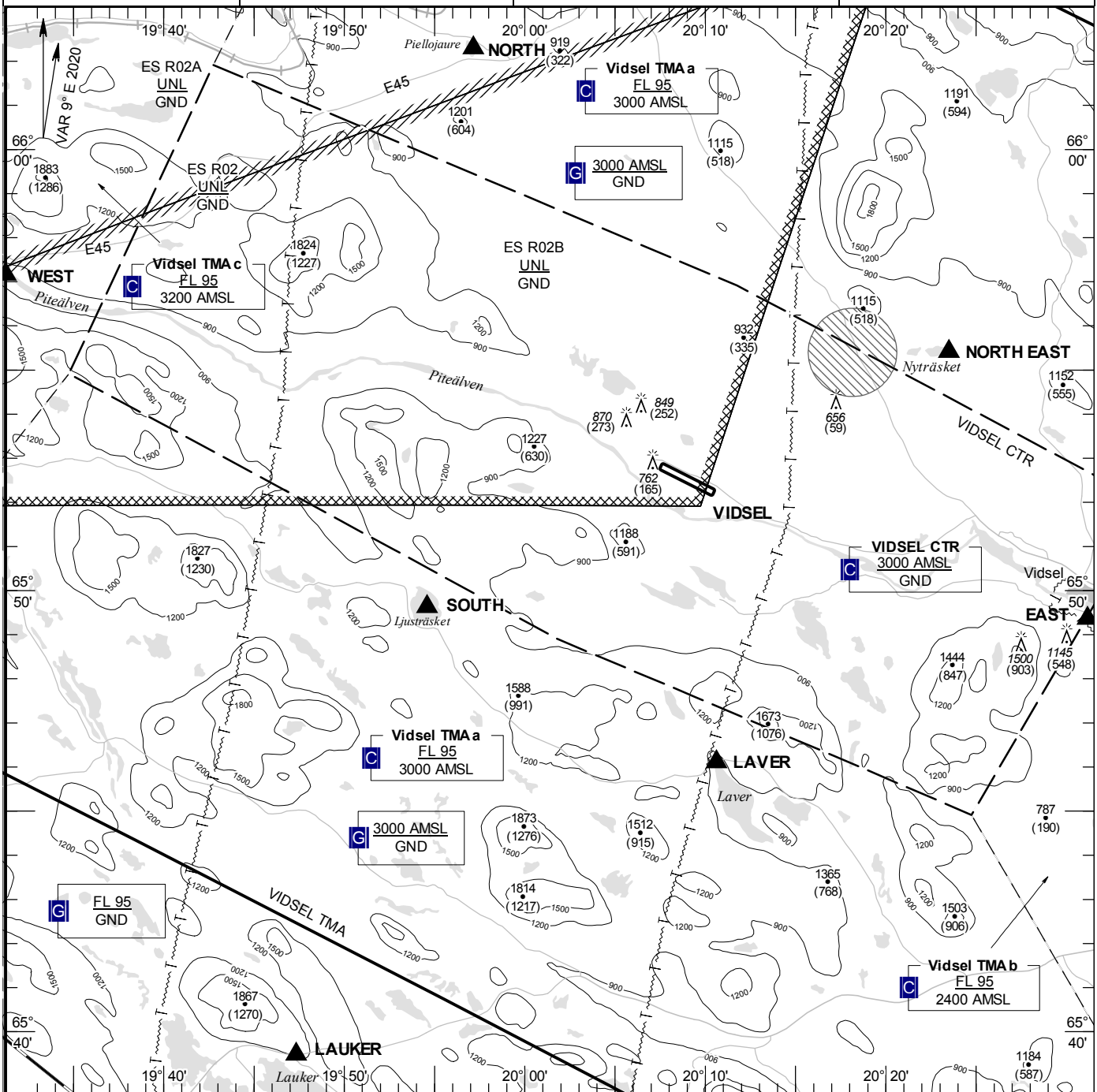
ELEV and ALT in ft  
HGT in ft above AD ELEV

**TA 5000 AMSL**

**VIDSEL TOWER 130.400**  
**VIDSEL APPROACH 124.150**

**AD 2 ESPE 6-1**

**VIDSEL SWEDEN**



**Communication failure**

NIL

RWY	THR	PAPI
NR	ELEV	(MEHT)
11	596 ft	NIL
29	594 ft	NIL

**Entry / exit point**

NORTH: Lake Piellojaure	660217N 0195709E
NORTH EAST: Lake Nyträsket	655524N 0202330E
EAST: Southeast of Vidsel village, south of Piteälven	654921N 0203110E
LAVER: Lake Laver	654606N 0201037E
SOUTH: Lake Ljusträsket	654937N 0195435E
LAUKER: Lake Lauker	653928N 0194720E
WEST: Bridge E45 over Piteälven	655709N 0193115E

**Remark**

Avoid Noise Sensitive Area below 3000 ft GND

**Legend**

See GEN 2.3

**Entry / exit point outside chart border**

SLENG: Lake Sleng 654907N 0192621E

**Holding**

NIL

LFV

CHANGE: TMA a, b, c new, CTR.

AIRAC AMDT 1/2022 **27 JAN 2022**