

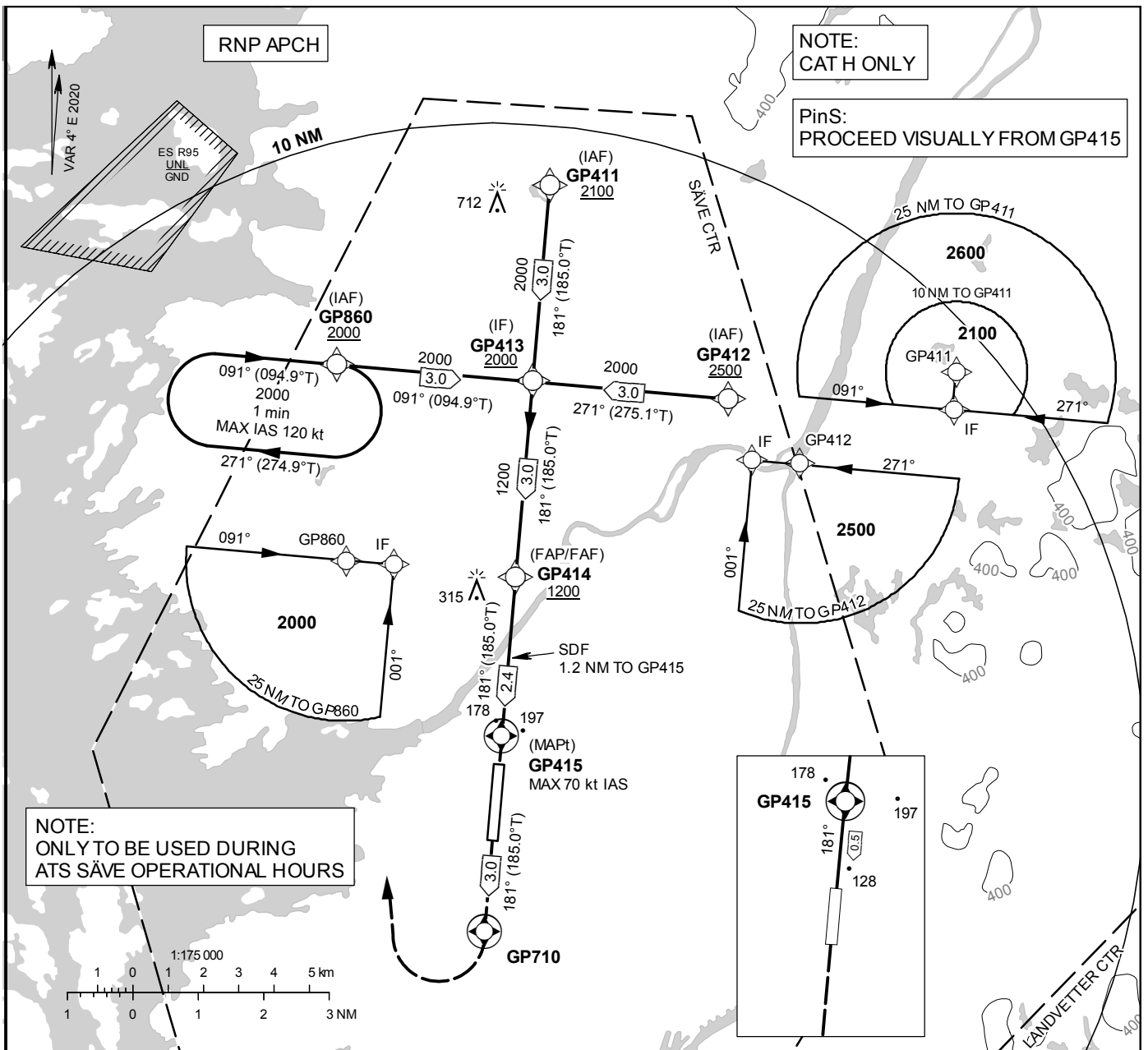
**INSTRUMENT
APPROACH
CHART - ICAO**

THR ELEV 48 ft, AD ELEV 59 ft
 OCH are related to THR.
 BRG are MAG (True).
 ALT, HGT and ELEV in ft.

SAËVE TOWER 119.055

RNP 181 (LPV, LNAV only)

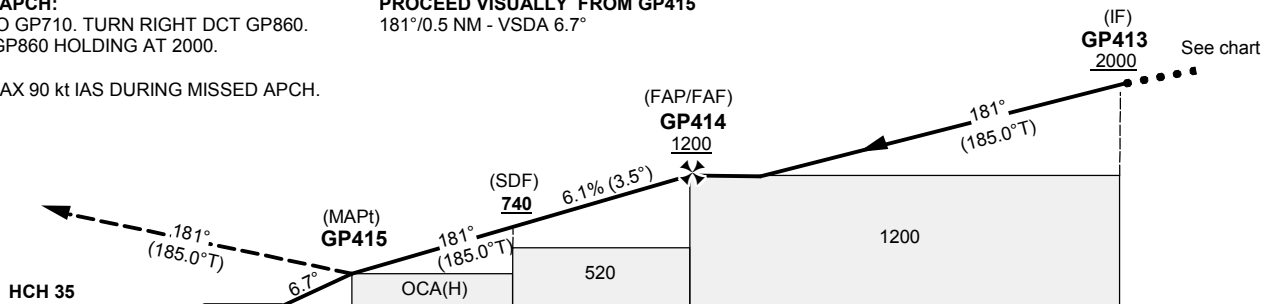
EGNOS Ch89927 E18A



TA 5000 ft AMSL *Timing not authorized for defining MAPt

MISSED APCH:
 CLIMB TO GP710. TURN RIGHT DCT GP860.
 ENTER GP860 HOLDING AT 2000.
 NOTE: MAX 90 kt IAS DURING MISSED APCH.

PROCEED VISUALLY FROM GP415
 181°/0.5 NM - VSDA 6.7°



Cat of ACFT	OCA (H)		Final approach Dist to GP415	Distance FAF-MAPt 2.4 NM*							
	H			NM	7	6	5	4	3	2	1
LPV	298 (250)		ALT	Ft	-	-	-	-	-	1050	670
LNAV	450 (410)		GS	kt	60		70				
			Time	min:s	2:26		2:05				
			Rate of descent	ft/min	370		435				

RNP 181

SN	Path Desc	WPT ID	Fly-over	Course °M(°T)	Mag Var	Dist (NM)	Rec Navaid	Turn Dir	ALT (ft)	Speed (kt)	VPA	Arc Centre Radius	Nav Spec
010	IF	GP860	-	-	-4.0	-	-	-	+2000	-	-	-	RNP APCH
020	TF	GP413	-	-	-4.0	3.0	-	-	+2000	-	-	-	RNP APCH
010	IF	GP411	-	-	-4.0	-	-	-	+2100	-	-	-	RNP APCH
020	TF	GP413	-	-	-4.0	3.0	-	-	+2000	-	-	-	RNP APCH
010	IF	GP412	-	-	-4.0	-	-	-	+2500	-	-	-	RNP APCH
020	TF	GP413	-	-	-4.0	3.0	-	-	+2000	-	-	-	RNP APCH
030	TF	GP414	-	-	-4.0	3.0	-	-	+1200	-	-	-	RNP APCH
040	TF	GP415	Y	-	-4.0	2.4	-	-	-	-70	-3.5	-	RNP APCH
060	TF	GP710	Y	-	-4.0	3.0	-	-	-	-90	-	-	RNP APCH
070	DF	GP860	-	-	-4.0	-	-	R	2000	-	-	-	RNP APCH
080	HM	GP860	-	091°(094.9°T)	-4.0	1 min	-	R	+2000	-120	-	-	RNP APCH

Note: Recommended RNAV procedure coding is based on ARINC 424-15 and is provided solely to indicate which procedure design protection areas were used in the Instrument Flight Procedure Design process.

Note: Published OCA(H) values are obstacle clearance values. Decision heights (DH) below 250 ft shall not be used due to approach operation Type A limitations.

FAS Data Block

RNP 181

Operation Type	0
SBAS Provider	1
Airport Identifier	ESGP
Runway	RW18
Approach Performance Designator	0
Route Indicator	-
Reference Path Data Selector	0
Reference Path Identifier	E18A
LTP/FTP Latitude	574704.8430N
LTP/FTP Longitude	0115218.8665E
LTP/FTP Ellipsoidal Height	50.3
FPAP Latitude	574538.0630N
FPAP Longitude	0115204.6410E
Threshold Crossing Height	27.3
TCH Units	M
Glide path Angle	3.5
Course Width at threshold	105
Length Offset	0
Horizontal alert limit (HAL)	40
Vertical alert limit (VAL)	35
PRECISION APPROACH PATH CRC REMAINDER	FD2B8F26

NON FAS DATA BLOCK FIELDS

LTP Orthometric Height	14.6
FPAP Orthometric Height	14.6