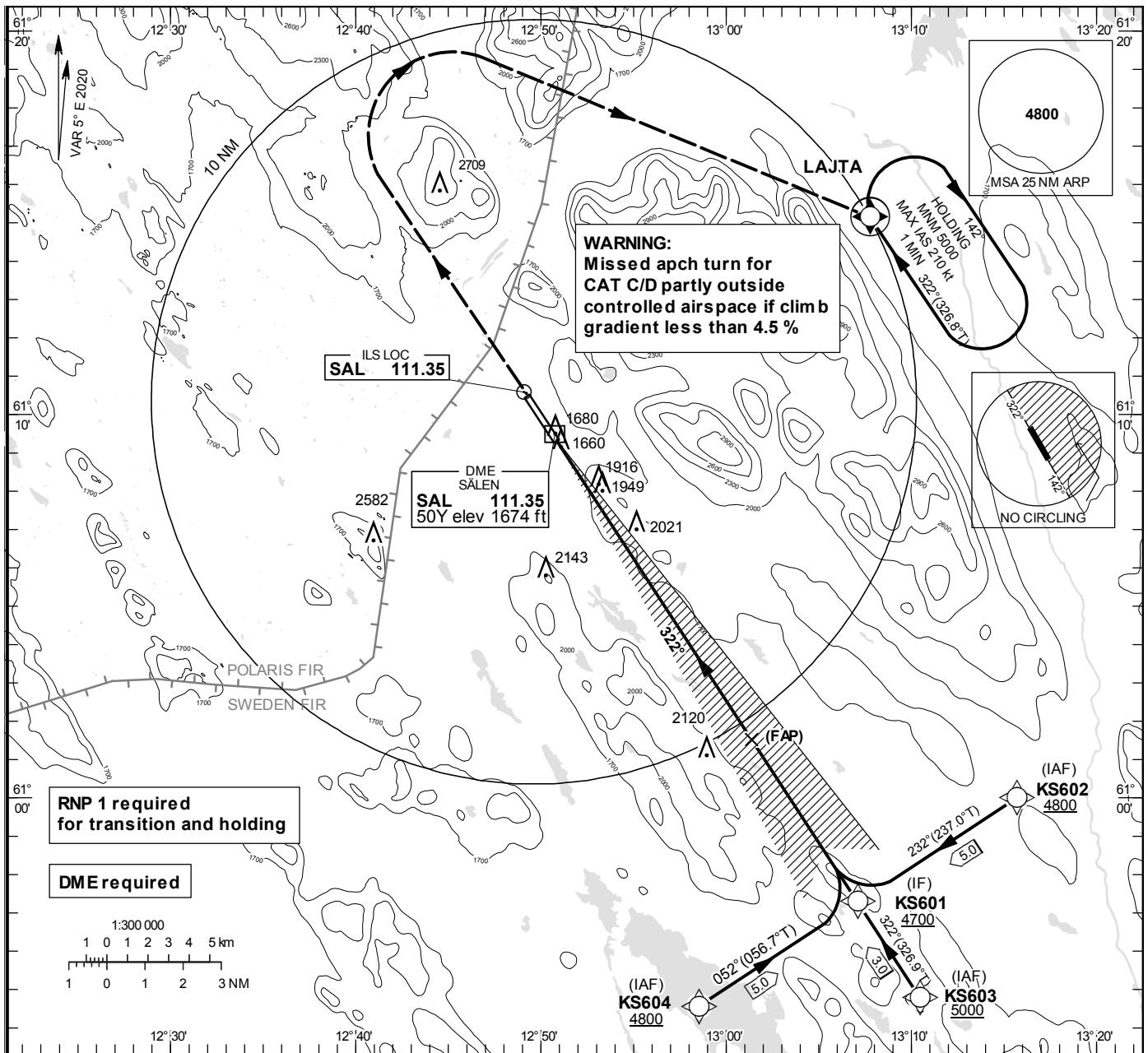


ILS or LOC RWY 33

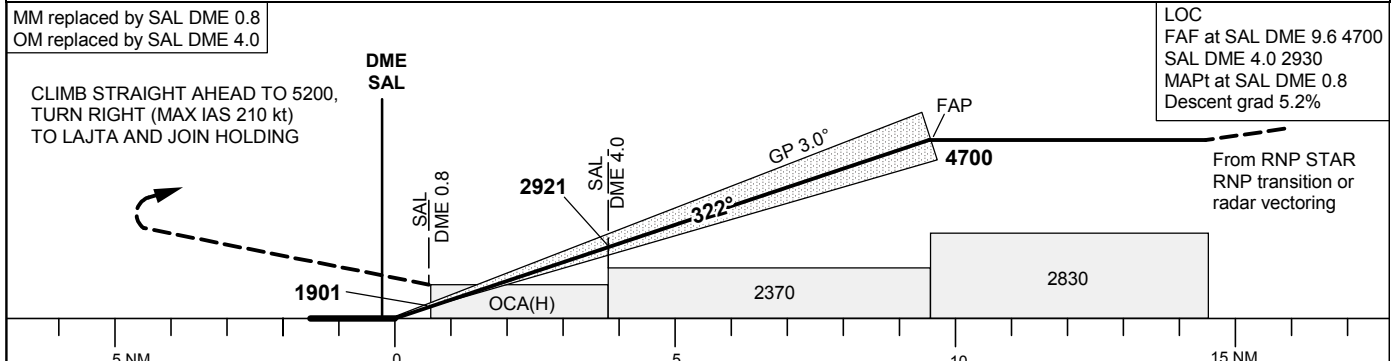
SÄLEN TOWER 124.460

THR ELEV 1643.8 ft, AD ELEV 1649 ft
 OCH are related to THR.
 Circling OCH are related to AD ELEV.
 BRG are MAG
 ALT. HGT and ELEV in ft.

INSTRUMENT
 APPROACH
 CHART – ICAO



TA 6000 ft AMSL RDH 50.5 ft *Timing not authorized for defining the MAPt



Cat of ACFT	OCA (H)				Final approach	LOC Distance FAF-MAPt 8.8 NM*								
	A	B	C	D		DME SAL NM	2	3	4	5	6	7	8	9
Straight in Approach	CAT I	1810(167)	1820(177)	1830(187)	1840(197)	ALT	2280	2600	2920	3240	3560	3880	4190	4510
	CAT II (2.5%)	1722(79)	1739(96)	1751(108)	1765(122)	GS	kt	80	100	120	140	160	180	
	CAT II (3.0%)	1694(51)	1705(62)	1719(76)	1734(91)	Time	min:s	6:35	5:16	4:23	3:46	3:18	2:56	
	LOC	2270(630)				Rate of descent	ft/min	425	530	635	745	850	955	
CAT III B approved (3.0%)														
Circling SW RWY	2260(620)	2260(620)	2540(900)	2980(1340)	(*)MNM MISSED APCH climb grad									