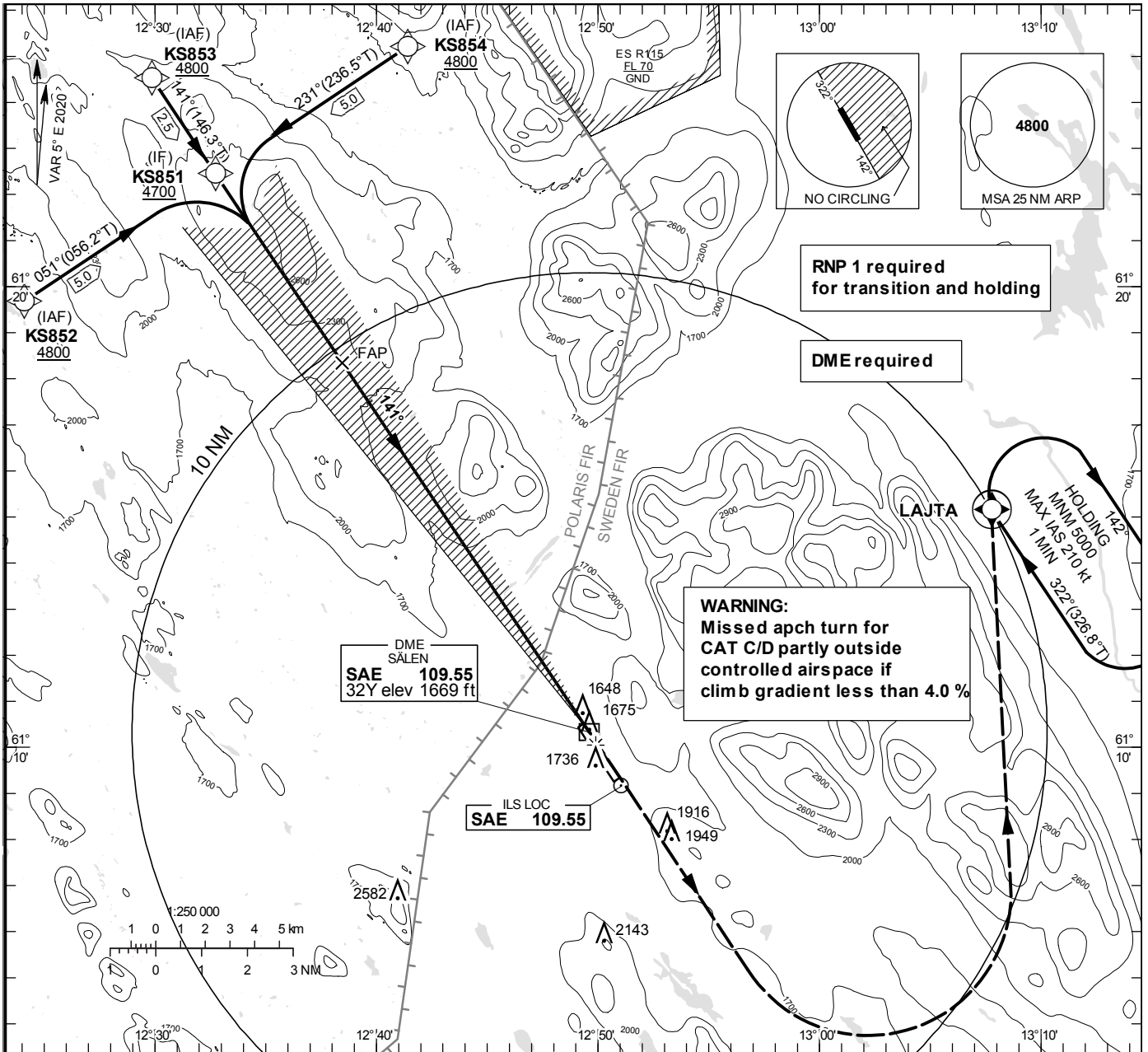


**INSTRUMENT APPROACH CHART – ICAO**

THR ELEV 1643.8 ft, AD ELEV 1649 ft  
 OCH are related to THR.  
 Circling OCH are related to AD ELEV.  
 BRG are MAG  
 ALT. HGT and ELEV in ft.

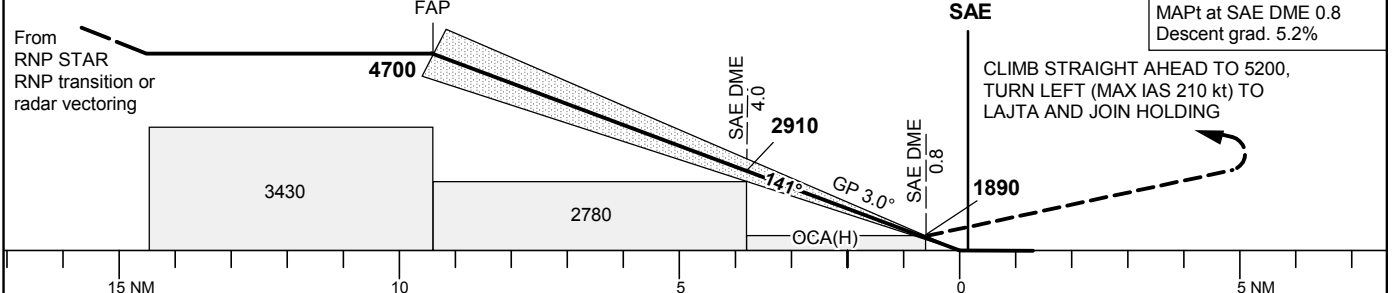
SÄLEN TOWER 124.460

ILS or LOC RWY 15



TA 6000 ft AMSL RDH 52.2 ft \*Timing not authorized for defining the MAPt

MM replaced by SAE DME 0.8  
 OM replaced by SAE DME 4.0



Cat of ACFT	OCA (H)				Final approach	LOC Distance FAF-MAPt 8.8 NM*								
	A	B	C	D		9	8	7	6	5	4	3	2	
Straight-in Approach	CAT I	1789(146)	1799(156)	1809(166)	1821(178)	ALT	4500	4180	3860	3550	3230	2910	2590	2270
	CAT II	1694(51)	1705(62)	1719(76)	1736(93)	GS	kt	80	100	120	140	160	180	
	LOC	1960(320)				Time	min:s	6:37	5:18	4:25	3:47	3:18	2:56	
Circling SW RWY	2220(580)	2250(610)	2540(900)	2980(1340)	Rate of descent	ft/min	425	530	635	745	850	955		