

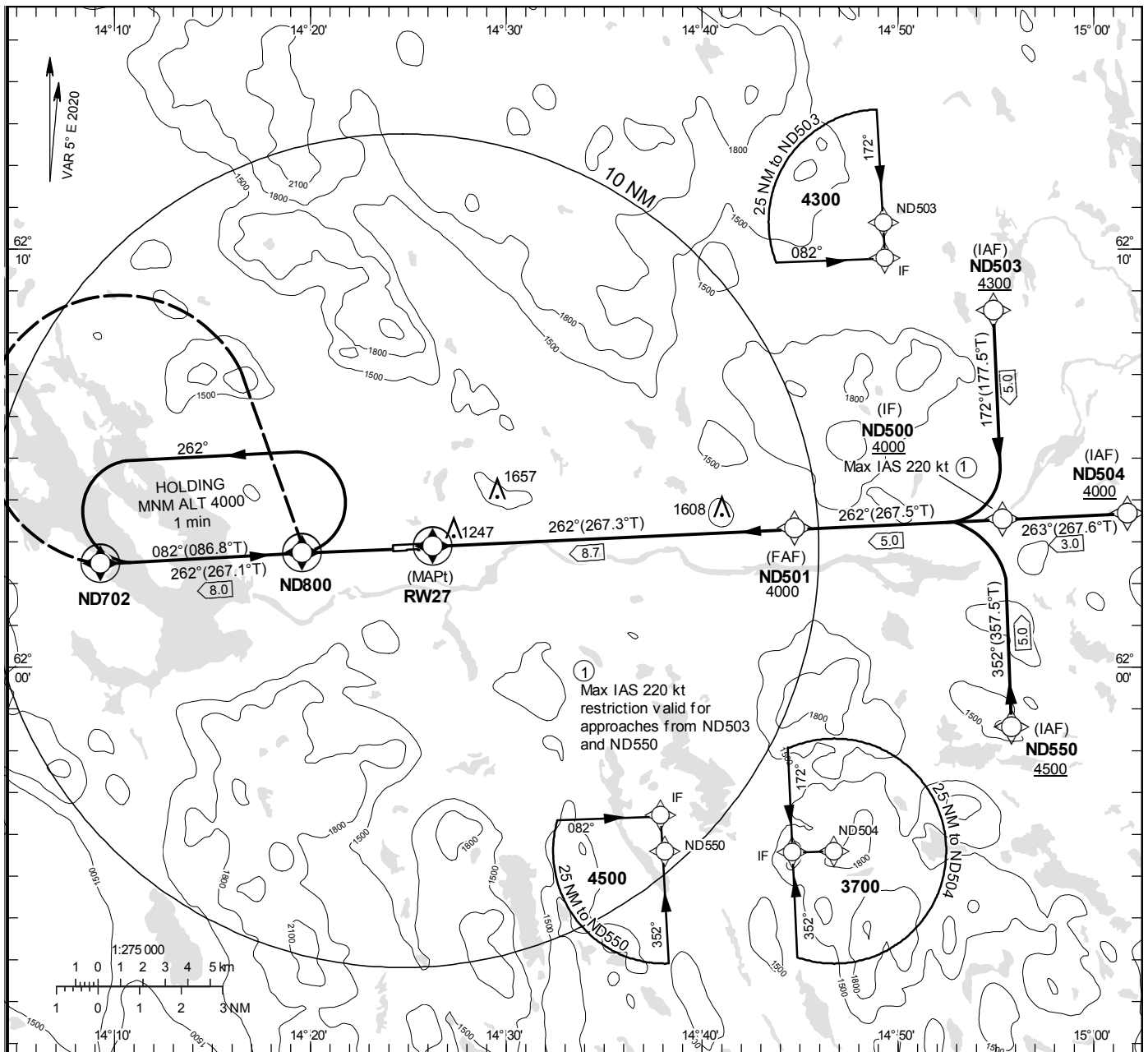
**INSTRUMENT
APPROACH
CHART – ICAO**

THR ELEV 1177 ft, AD ELEV 1178 ft
OCH are related to THR.
BRG are MAG (True).
ALT, HGT and ELEV in ft.

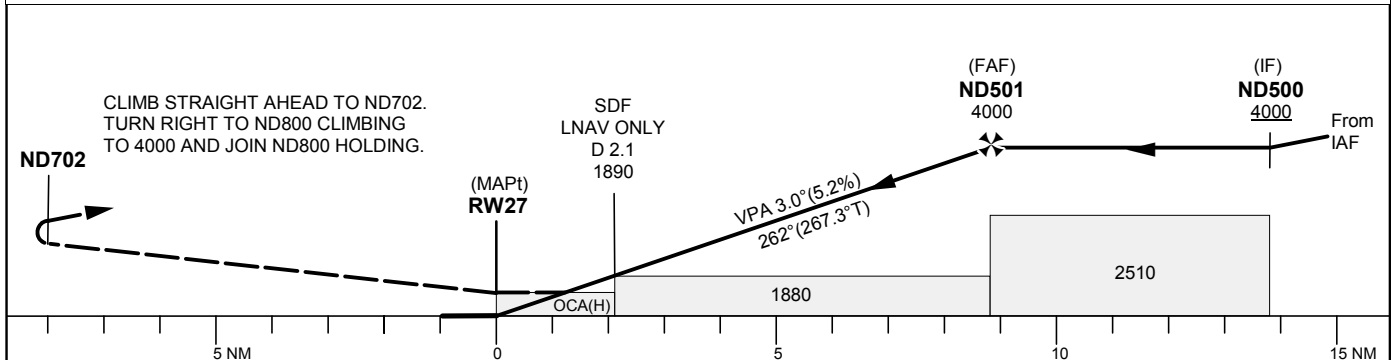
SVEG INFORMATION 122.205

RNP RWY 27

EGNOS Ch 90027 E 27A



TA 6000 ft AMSL RDH 50 ft



Cat of ACFT	OCA (H)			Distance FAF-MAPt 8.7 NM							
	A	B	C	Dist to RWY 27 NM	8	7	6	5	4	3	2
LPV	1377(200)	1389(212)	1397(220)	ALT	3770	3460	3140	2820	2500	2180	1860
LNAV	1680(510)			GS	kt	80	100	120	140	160	
				Rate of descent	ft/min	425	530	635	745	850	

RNP RWY 27 via ND550

Path Desc	Waypoint Identifier	Fly-over	Course °M(°T)	Dist (NM)	Turn Dir	Altitude	Speed	VPA/RDH	Rec Navaid	Navigation Specification
IF	ND550	-	-	-	-	+4500	-	-	-	RNP APCH
TF	ND500	-	352°(357.5°)	5.0	-	+4000	-220	-	-	RNP APCH

RNP RWY 27 via ND504

Path Desc	Waypoint Identifier	Fly-over	Course °M(°T)	Dist (NM)	Turn Dir	Altitude	Speed	VPA/RDH	Rec Navaid	Navigation Specification
IF	ND504	-	-	-	-	-	-	-	-	RNP APCH
TF	ND500	-	263°(267.6°)	3.0	-	+4000	-	-	-	RNP APCH

RNP RWY 27 via ND503

Path Desc	Waypoint Identifier	Fly-over	Course °M(°T)	Dist (NM)	Turn Dir	Altitude	Speed	VPA/RDH	Rec Navaid	Navigation Specification
IF	ND503	-	-	-	-	+4300	-	-	-	RNP APCH
TF	ND500	-	172°(177.5°)	5.0	-	+4000	-220	-	-	RNP APCH

Path Desc	Waypoint Identifier	Fly-over	Course °M(°T)	Dist (NM)	Turn Dir	Altitude	Speed	VPA/RDH	Rec Navaid	Navigation Specification
IF	ND500	-	-	-	-	+4000	-	-	-	RNP APCH
TF	ND501	-	262°(267.5°)	5.0	-	@4000	-	-	-	RNP APCH
TF	RW27	Y	262°(267.3°)	8.7	-	@1227	-	-3.0/50	-	RNP APCH
TF	ND702	Y	262°(267.1°)	8.0	-	-	-	-	-	RNP APCH
DF	ND800	Y	-	-	R	+4000	-	-	-	RNP APCH

Path Desc	Waypoint Identifier	Fly-over	Course °M(°T)	Dist (NM)	Turn Dir	Altitude	Speed	VPA/RDH	Rec Navaid	Navigation Specification
HM	ND800	Y	082°(086.8°)	-	L	+4000	-	-	-	RNP 1

FAS Data Block

RNP RWY 27

Input data

Operation Type	0
SBAS Provider	1
Airport Identifier	ESND
Runway	27
Runway Direction	0
Approach Performance Designator	0
Route Indicator	
Reference Path Data Selector	0
Reference Path Identifier	E27A
LTP/FTP Latitude	620253.2400N
LTP/FTP Longitude	0142614.2100E
LTP/FTP Ellipsoidal Height (metres)	391.7
FPAP Latitude	620250.4100N
Delta FPAP Latitude (seconds)	-2.8300
FPAP Longitude	0142417.2600E
Delta FPAP Longitude (seconds)	-116.9500
Threshold Crossing Height	15.0
TCH Units Selector	1
Glidepath Angle (degrees)	3.00
Course Width (metres)	105.00
Length Offset (metres)	0
HAL (metres)	40.0
VAL (metres)	50.0

Output data

Data Block	10 04 0E 13 05 1B 00 00 01 37 32 05 70 CF A0 1A 84 20 32 06 4D 23 E4 E9 FF 54 6E FC 2C 81 2C 01 64 00 C8 FA 92 5B 3A 42
Calculated CRC Value	925B3A42

Required Additional Data

ICAO Code	ES
LTP/FTP Orthometric Height (metres)	358.4
FPAP Orthometric Height (metres)	357.2