

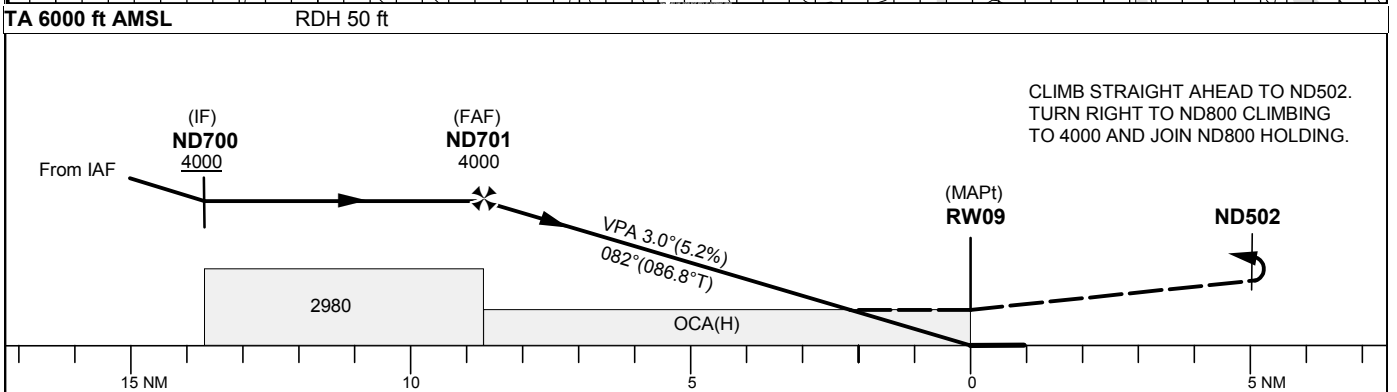
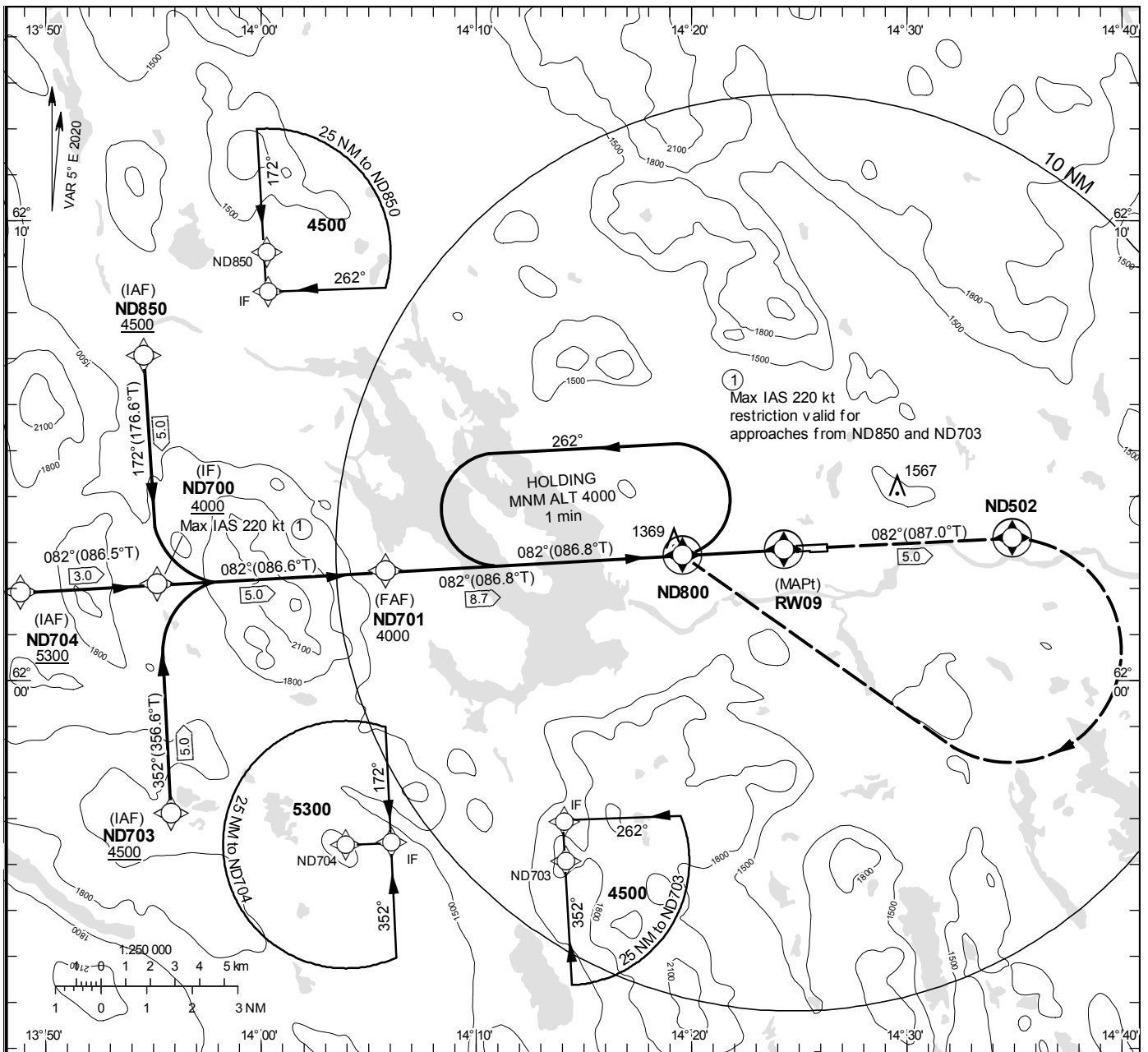
**INSTRUMENT
APPROACH
CHART – ICAO**

THR ELEV 1172.7 ft, AD ELEV 1178 ft
 OCH are related to THR.
 BRG are MAG (True).
 ALT, HGT and ELEV in ft.

SVEG INFORMATION 122.205

RNP RWY 09

EGNOS Ch 87862 E 09A



Cat of ACFT	OCA (H)			Final approach							
	A	B	C	Distance FAF-MAPt 8.7 NM							
LPV	1378(206)	1290(218)	1398(226)	8	7	6	5	4	3	2	1
LNAV	1620(450)			ALT	3770	3450	3130	2810	2500	2180	1860
				GS	kt	80	100	120	140	160	
				Rate of descent	ft/min	425	530	635	745	850	

RNP RWY 09 via ND850

Path Desc	Waypoint Identifier	Fly-over	Course °M(°T)	Dist (NM)	Turn Dir	Altitude	Speed	VPA/RDH	Rec Navaid	Navigation Specification
IF	ND850	-	-	-	-	+4500	-	-	-	RNP APCH
TF	ND700	-	172°(176.6°)	5.0	-	+4000	-220	-	-	RNP APCH

RNP RWY 09 via ND704

Path Desc	Waypoint Identifier	Fly-over	Course °M(°T)	Dist (NM)	Turn Dir	Altitude	Speed	VPA/RDH	Rec Navaid	Navigation Specification
IF	ND704	-	-	-	-	+5300	-	-	-	RNP APCH
TF	ND700	-	082°(086.5°)	3.0	-	+4000	-	-	-	RNP APCH

RNP RWY 09 via ND703

Path Desc	Waypoint Identifier	Fly-over	Course °M(°T)	Dist (NM)	Turn Dir	Altitude	Speed	VPA/RDH	Rec Navaid	Navigation Specification
IF	ND703	-	-	-	-	+4500	-	-	-	RNP APCH
TF	ND700	-	352°(356.6°)	5.0	-	+4000	-220	-	-	RNP APCH

Path Desc	Waypoint Identifier	Fly-over	Course °M(°T)	Dist (NM)	Turn Dir	Altitude	Speed	VPA/RDH	Rec Navaid	Navigation Specification
IF	ND700	-	-	-	-	+4000	-	-	-	RNP APCH
TF	ND701	-	082°(086.6°)	5.0	-	@4000	-	-	-	RNP APCH
TF	RW09	Y	082°(086.8°)	8.7	-	@1223	-	-3.0/50	-	RNP APCH
TF	ND502	Y	082°(087.0°)	5.0	-	-	-	-	-	RNP APCH
DF	ND800	Y	-	-	R	+4000	-	-	-	RNP APCH

Path Desc	Waypoint Identifier	Fly-over	Course °M(°T)	Dist (NM)	Turn Dir	Altitude	Speed	VPA/RDH	Rec Navaid	Navigation Specification
HM	ND800	Y	082°(086.8°)	-	L	+4000	-	-	-	RNP 1

FAS Data Block

RNP RWY 09

Input data

Operation Type	0
SBAS Provider	1
Airport Identifier	ESND
Runway	09
Runway Direction	0
Approach Performance Designator	0
Route Indicator	
Reference Path Data Selector	0
Reference Path Identifier	E09A
LTP/FTP Latitude	620250.4100N
LTP/FTP Longitude	0142417.2600E
LTP/FTP Ellipsoidal Height (metres)	390.4
FPAP Latitude	620253.2400N
Delta FPAP Latitude (seconds)	2.8300
FPAP Longitude	0142614.2100E
Delta FPAP Longitude (seconds)	116.9500
Threshold Crossing Height	15.0
TCH Units Selector	1
Glidepath Angle (degrees)	3.00
Course Width (metres)	105.00
Length Offset (metres)	0
HAL (metres)	40.0
VAL (metres)	50.0

Output data

Data Block	10 04 0E 13 05 09 00 00 01 39 30 05 54 B9 A0 1A D8 8E 2E 06 40 23 1C 16 00 AC 91 03 2C 81 2C 01 64 00 C8 FA 0D C6 E2 57
Calculated CRC Value	0DC6E257

Required Additional Data

ICAO Code	ES
LTP/FTP Orthometric Height (metres)	357.2
FPAP Orthometric Height (metres)	358.4